

TM 5-3431-200-20P

DEPARTMENT OF THE ARMY TECHNICAL MANUAL

ORGANIZATIONAL MAINTENANCE REPAIR PARTS

AND SPECIAL TOOLS LIST

WELDING SET, ARC, INERT GAS SHIELDED:

PLASTIC OR METAL LINED GUN; FOR

3/64 IN. WIRE; DC, 115V

(WESTINGHOUSE MODEL SA-135)

FSN 3431-879-9709



HEADQUARTERS, DEPARTMENT OF THE ARMY

FEBRUARY 1969

TECHNICAL MANUAL }
 No. 5-3431-200-20P }

HEADQUARTERS
 DEPARTMENT OF THE ARMY
 WASHINGTON, D. C., 8 February 1969

ORGANIZATIONAL MAINTENANCE REPAIR PARTS AND SPECIAL TOOLS LIST
WELDING SET, ARC, INERT GAS SHIELDED: PLASTIC OR METAL
LINED GUN; FOR 3/64 IN. WIRE; DC, 115V (WESTINGHOUSE
MODEL SA-135) FSN 3431-879-9709

Current as of 12 December 1968

	Paragraph	Page
SECTION I. INTRODUCTION		
Scope	1	iii
General	2	iii
Explanation of columns	3	iii
Special information	4	iv
How to locate repair parts	5	v
Abbreviations	6	v
Federal supply codes for manufacturers	7	v
Report of equipment publication improvements	8	v
II. PRESCRIBED LOAD ALLOWANCE		vii
III. SPECIAL TOOLS, TEST AND SUPPORT EQUIPMENT FOR ORGANIZATIONAL MAINTENANCE-NOT APPLICABLE		
IV. REPAIR PARTS FOR ORGANIZATIONAL MAINTENANCE		
Group 22. Body, Chassis or Hull, and Accessory Items		
2210 Data plates and instruction holders		1
44. Welding, Metalizing, Metal Heating and Plating Equipment		
4400 Gas welding, flame cutting	1
4407 Control panels, housing, cubicles	5
4408 Connecting devices	12
4409 Protective devices, electrical	14
4410 Switching, timing and speed control	14
4411 Resistors	19
4413 Rectifiers	20
4415 Head, torch and gun unitized components	21
95. General Use Standardized Parts		
9501 Bulk material	25
SECTION V. FEDERAL STOCK NUMBER AND REFERENCE NUMBER INDEX		38

*This manual together with TM 5-3431-200-35P, supersedes TM 5-3431-200-25P, 27 August 1962.

SECTION I

INTRODUCTION

1. Scope

This manual lists repair parts required for the performance of organizational maintenance of the welder.

2. General

a. The Repair Parts List is arranged as follows:

(1) Individual parts and major assemblies are listed alphabetically by item name within the numbered functional groups.

(2) Assembly components and subassemblies are indented and listed alphabetically by item name under major assemblies.

b. This Repair Parts and Special Tools List is divided into the following sections:

(1) *Prescribed Load Allowance (PLA) - Section II.* A consolidated listing of repair parts quantitatively allocated for initial stockage at the organizational level. *This is a mandatory stockage allowance.*

(2) *Special Tools, Test and Support Equipment-Section III.* A list of special tools, test and support equipment authorized for the performance of maintenance at the organizational level. (Not applicable)

(3) *Repair Parts-Section IV.* A list of repair parts authorized for the performance of maintenance at the organizational level.

(4) *Federal Stock Number and Reference Number Index Section V.* A list of Federal stock number followed by reference numbers in ascending alpha-numeric sequence, cross-reference to index number.

3. Explanation of Columns

The following provides an explanation of columns in the tabular lists in Sections II, III, and IV:

a. Source, Maintenance and Recoverability Code (SMR)

(1) Source Code, indicates the selection

status and source for the listed item, Source codes are:

<i>Code</i>	<i>Explanation</i>
P	Applied to repair parts which are stocked in or supplied from DSA/GSA or Army supply system, and authorized for use at indicated maintenance categories.
M	Applied to repair parts which are not procured or stocked but are to be manufactured at indicated maintenance categories.
A	Applied to assemblies which are not procured or stocked as such but are made up of two or more units, each of which carry individual stock numbers and descriptions and are procured and stocked and can be assembled by units at indicated maintenance categories.
X	Applied to parts and assemblies which are not procured or stocked, the mortality of which is normally below that of the applicable end item, and the failure of which should result in retirement of the end item from the supply system.
X1	Applied to repair parts which are not procured or stocked, the requirement for which will be supplied by use of the next higher assembly or components.
X2	Applied to repair parts which are not stocked. The indicated maintenance category requiring such repair parts will attempt to obtain them through cannibalization; if not obtainable through cannibalization, such repair parts will be requisitioned with supporting justification through normal supply channels.
C	Applied to repair parts authorized for local procurements. If not obtainable from local procurement, such repair parts will be requisitioned through normal supply channels with a supporting statement of nonavailability from local procurement.
G	Applied to major assemblies that are procured with PEMA (Procurement Equipment Missile Army) funds for initial issue only to be used as exchange assemblies at DSU and GSU maintenance level. These assemblies will not be stocked above DSU and GSU or returned to depot supply level.

Note. Source Code is not shown on common hardware items known to be readily available in Army supply channels and through local procurement.

(2) Maintenance Code, indicates the lowest level of maintenance authorized to install the listed item. The maintenance level code is:

Code	Explanation
0	Organizational maintenance

(3) Recoverability Code, indicates whether unserviceable items should be returned for recovery or- salvage. Items not coded are expendable. Recoverability codes are:

Code	Explanation
R	Applied to repair parts and assemblies which are economically repairable at DSU and GSU activities and normally are furnished by supply on an exchange basis.
T	Applied to high dollar value recoverable repair parts which are subject to special handling and are issued on an exchange basis. Such repair parts normally are repaired or overhauled at depot maintenance activities.
U	Applied to repair parts specifically selected for salvage by reclamation units because of precious metal content, critical materials, high dollar value reusable casings or castings.

(4) This column also lists, below the SMR code, an index number for each item in ascending numerical sequence, which is used to locate items in the publication when the Federal stock number and for reference number is known.

b. Federal Stock Number. This column indicates the Federal stock number for the item.

c. Description. This column indicates the Federal item name and any additional description of the item required. A part number or other reference number is followed by the applicable five-digit Federal supply code for manufacturers in parentheses. Material required for manufacture or fabrication is identified.

d. Unit of Issue. This column indicates the unit used as a basis for issue, e.g., ea, pr, ft, yd, etc.

e. Quantity Incorporated in Unit Packs. This column indicates the actual quantity contained in the unit pack.

f. Quantity Incorporated in Unit. This column indicates the quantity of the item used in the functional group.

g. Fifteen-Day Organizational Maintenance Allowance.

(1) The allowance columns are divided into four subcolumns. Indicated in each subcolumn is the quantity of items authorized for the number of equipments supported. Items authorized for use as required but not for initial stockage are identified with an asterisk in the allowance column.

TM 5-3431-200-15
TM 3431-200-35P

operator, organizational, field and depot maintenance manual.
Direct and general support and depot maintenance repair parts and special tool lists.

(2) The quantitative allowances for organizational level of maintenance represents one initial prescribed load for a 15-day period for the number of equipments supported. Units and organizations authorized additional prescribed loads will multiply the number of prescribed loads authorized by the quantity of repair parts reflected in the appropriate density column applicable to the number of items supported to obtain the total quantity of repair parts authorized.

(3) Organizational units providing maintenance for more than 100 of these equipments shall determine the total quantity of parts required by converting the equipment quantity to a decimal factor by placing a decimal point before the next to last digit of the number to indicate hundredths, and multiplying the decimal factor by the parts quantity authorized in the 51-100 allowance column. Example, authorized allowance for 51-100 equipments is 40 ; for 150 equipments multiply 40 by 1.50 or 60 parts required.

(4) Subsequent changes to allowances will be limited as follows: No change in the range of items is authorized. If additional items are considered necessary, recommendation should be forwarded to U.S. Army Mobility Equipment Command for exception or revision to the allowance list. Revisions to the range of items authorized will be made by this Command based upon engineering experience, demand data, or TAERS information.

h. Illustration, Column. This column is divided as follows:

(1) *Figure Number Column.* Indicates the figure number of the illustration in which the item is shown.

(2) *Item Number, Column.* Indicates the callout number used to reference the item in the illustration.

4. Special Information

a. Repair parts mortality has been based on 1,000 hours of operation per year.

b. Parts which require manufacture or assembly at a category higher than that authorized for installation will indicate the source column the higher category.

c. The following publications pertain to the welder and its components:

5. How to locate Repair Parts

a. When Federal stock number or reference number is unknown:

(1) *First.* Using the table of contents, determine the functional group within which the repair part belongs.

(2) *Second.* Find the illustration covering the functional group to which the repair part belongs.

(3) *Third.* Identify the repair part on the illustration, and note the illustration figure and item number of the repair part.

(4) *Fourth.* Using the Repair Parts Listing, find the functional group to which the repair part belongs and locate the illustration figure and item number noted on the illustration.

b. When Federal stock number or reference number is known:

(1) *First.* Using the Index of Federal Stock Numbers and Reference Numbers, find the pertinent Federal Stock Number or Reference Number. This index is in ascending alpha-numeric sequence cross-referenced to an index number.

(2) *Second.* Using the Repair Part Listing, find the index number referenced in the Index of Federal Stock Numbers and Reference Numbers,

6. Abbreviations

ac..... alternating current
amp..... ampere (s)
AWG..... American Wire Gage
ctr..... center
dc..... direct current
deg..... degree
dia..... diameter
e a..... each

ft..... feet (foot)
Grp..... group
id..... inside diameter (s)
in..... inch (es)
lg..... long
mtg..... mounting
No..... number
od..... outside diameter (s)
sh..... sheet
thd..... thread (ed) (s)
thk..... thick (ness)
uf..... microfarad (s)
u/w..... used with
v..... volt (s)
w..... width
w /..... with

7. Federal Supply Codes for Manufacturers

Code	MU?wfacturer
14655 ..	Cornell-Dubilier Electric Corp.
28520 ..	Heyman Mfg. Co.
56289 ..	Sprague Electric Co.
63026 ..	Victor Equipment Co.
71279 ..	Cambridge Thermionic Corp.
72794 ..	DZUS Fastener Co. Inc.
75915 ..	Littlefuse Inc.
77342 ..	American Machine and Foundry Co.
88725 ..	Westinghouse Electric Corp Control Division

8. Report of Equipment Publication Improvements

Report of errors, omissions, and recommendations for improving this publication by the individual user is encouraged. Reports should be submitted on DA Form 2028 (Recommended Changes to DA Publications) and forwarded direct to Commanding General, U.S. Army Mobility Equipment Command, ATTN: AMSME-MPP, 4300 Goodfellow Boulevard, St. Louis, Mo. 631200.

SECTION II

PRESCRIBED LOAD ALLOWANCE

(1) Federal stock number	(2) Description useable on code	(3) Qty inc in pack unit	(4) 15-day org maint alw			
			(A) 1-5	(B) 6-20	(C) 21-50	(D) 1-100
	GROUP 44—WELDING METALIZING, METAL HEATING AND PLATING EQUIPMENT					
	4409—PROTECTIVE DEVICES, ELECTRICAL					
5920-065-3255	FUSE, CARTRIDGE			2	2	4
5920-280-4960	FUSE, CARTRIDGE			2	3	6
	4410—SWITCHING, TIMING AND SPEED CONTROL					
5910-668-3725	CAPACITOR				2	2
5910-875-7888	CAPACITOR			2	2	2
	4411—RESISTORS					
5905-875-7881	RHEOSTAT					2
5905-875-7883	RESISTOR					2
5905-875-7886	RESISTOR					2
5905-875-7887	RESISTOR					2
5905-875-7890	RESISTOR					2
	4413—RECTIFIERS					
5961-794-9862	RECTIFIER			2	2	2
	4415—HEAD, TORCH AND GUN UNITIZED COMPONENTS					
3431-446-2642	NOZZLE		2	7	13	25
3431-446-2644	TUBE, GUIDE			2	2	4
3431-446-2645	BUSHING, GUIDE			2	2	4
3431-446-2646	BUSHING, GUIDE			2	2	4

(1) SMR CODE	(2) FEDERAL STOCK INDEX NUMBER	(3) DESCRIPTION	(4) USABLE ON CODE	(5) QTY INC IN UNIT PACK	(6) QTY INC IN UNIT	(7) 15-DAY ORGANIZATIONAL MAINTENANCE ALW				(8) ILLUS- TRATION	
						(A)	(B)	(C)	(D)	(A) FIG NO.	(B) ITEM NO.
		REFERENCE NO. & MFR. CODE				1-5	6-20	21-50	51-100		
		SECTION IV REPAIR PARTS FOR ORGANIZATIONAL MAINTENANCE									
00001		GROUP 22 - BODY, CHASSIS OR HULL, AND ACCESSORY ITEMS									
00002		2210 - DATA PLATES AND INSTRUCTION HOLDERS									
X2 0 00003	3431-064-6459	PLATE, NAME: CONTROL 160P334H01A (88725)	EA		1					2	20
X2 0 00004	5305-014-8060	SCREW, TAPPING, THREAD FORMING; NAME PLATE MTG. CADMIUM OR ZINC PLATED, NO. 6-32 THD SIZE, 1/4 IN. LG	EA		4					2	22
00005		GROUP 44 - WELDING, METALIZING, METAL HEATING AND PLATING EQUIPMENT									
00006		4400 - GAS WELDING, FLAME CUTTING									
P O 00007	3431-509-2562	REGULATOR: ARGON GAS, TWO STAGES ZIN5945 (88725)	EA		1	*	*	*	*	2	1
X1 00008	4730-287-1592	BALL, BEARING: CHECK, 0.3125 IN. DIA 1405-8 (63026)	EA		1					1	5
X1 00009		BODY 0701-6010 (63026)	EA		1						
X1 00010		BODY 1001-08 (63026)	EA		1						
X1 00011	4820-472-9955	BUTTON: SPRING SV390-02 (63026)	EA		1						
X1 00012		BUTTON: SPRING SV390-02 (63026)	EA		1						
X1 00013		CONNECTION: INLET 1012-05 (63026)	EA		1						
X1 00014		CONNECTION: OUTLET 1012-05 (63026)	EA		1						
X1 00015		CONNECTION: OUTLET 50-20 (63026)	EA		1						

(1) SMR CODE	(2) FEDERAL STOCK INDEX NUMBER	(3) DESCRIPTION REFERENCE NO. & MFR. CODE	(4) USABLE ON CODE	UNIT OF ISSUE	(5) QTY INC IN UNIT PACK	(6) QTY INC IN UNIT	(7) 15-DAY ORGANIZATIONAL MAINTENANCE ALW (A) (B) (C) (D)	(8) ILLUS- TRATION (A) (B) FIG NO. ITEM NO.
X1 00016		CUP: THORPE TUBE 1002-02 (63026)		EA		1		1 7
X1 00017		DIAPHRAGM ASSEMBLY: HIGH PRESSURE 0730-03 (63026)		EA		1		
X1 00018		CENTRALIZER 0733-03 (63026)		EA		1		
X1 00019	6680-888-0056	DIAPHRAGM 0731-03 (63026)		EA		1		
X1 00020		PLATE: DIAPHRAGM 0735-01 (63026)		EA		1		
X1 00021		DIAPHRAGM ASSEMBLY: LOW PRESSURE 0730-02 (63026)		EA		1		
X1 00022		CENTRALIZER 0733-02 (63026)		EA		1		
X1 00023	6680-888-0055	DIAPHRAGM 0731-02 (63026)		EA		1		
X1 00024		NUT 1403-02 (63026)		EA		1		
X1 00025		PLATE: DIAPHRAGM 0735-02 (63026)		EA		1		
X1 00026		WASHER 63026-1406-01 (63026)		EA		1		
X1 00027	4310-607-8087	FILTER 930 (63026)		EA		2		
X1 00028	6685-072-6184	GAGE, PRESSURE, DIAL: BRASS CASE, 2 IN. 0 TO 4000 POUNDS 4000LB (63026)		EA		1		1 4
X1 00029		GASKET: THORPE TUBE, LOWER 1408-25 (63026)		EA		1		
X1 00030		GASKET: THORPE TUBE, UPPER 1408-82 (63026)		EA		1		1 2

(1) SMR CODE	(2) FEDERAL STOCK NUMBER	(3) DESCRIPTION	(4) REFERENCE NO. & MFR. CODE	USABLE ON CODE	UNIT OF ISSUE	(5) QTY INC IN UNIT PACK	(6) QTY INC IN UNIT	(7) 15-DAY ORGANIZATIONAL MAINTENANCE ALW				(8) ILLUS- TRATION	
								(A)	(B)	(C)	(D)	(A) FIG NO.	(B) ITEM NO.
X1 00031		GUIDE: SPRING 0760-01 (63026)			EA		1						
X1 00032		HOUSING: CAP, HIGH PRESSURE 0720-28 (63026)			EA		1						
X1 00033		HOUSING: CAP, LOW PRESSURE 0720-29 (63026)			EA		1						
X1 00034	1450-775-6226	NOZZLE, HIGH PRESSURE AND LOW PRESSURE VTS85-06 (63026)			EA		2						
X1 00035		NUT: BODY 1001-06 (63026)			EA		1					1	1
X1 00036		NUT: CAP 1403-05 (63026)			EA		1						
X1 00037		NUT: CAP, DIAPHRAGM PLATE 0737-03 (63026)			EA		1						
X1 00038		NUT: INLET 973-01A (63026)			EA		1						
X1 00039	5310-080-6694	NUT, FLAIN, CAP VTS85-09 (63026)			EA		1						
X1 00040	5330-798-3017	PACKING, PREFORMED 1407-21 (63026)			EA		1					1	6
X1 00041	5330-072-6185	PACKING, PREFORMED 1407-11 (63026)			EA		1						
X1 00042	5330-807-5490	RETAINER, PACKING: HIGH PRESSURE AND LOW PRESSURE 0708-01 (63026)			EA		2						
X1 00043		RING: SLIP, DIAPHRAGM 0705-03 (63026)			EA		1						
X1 00044		SCREW: ADJUSTING VTS95-06 (63026)			EA		1						

(1) SMR CODE	(2) FEDERAL STOCK NUMBER	(3) DESCRIPTION	(4) REFERENCE NO. & MFR. CODE	(5) QTY INC IN UNIT	(6) QTY INC IN UNIT	(7) 15-DAY ORGANIZATIONAL MAINTENANCE ALW	(8) ILLUS- TRATION
INDEX NO.			USABLE ON CODE	UNIT OF ISSUE	PACK	(A) (B) (C) (D)	(A) (B) FIG ITEM NO. NO.
X1 00045		SCREW: ADJUSTING, HIGH PRESSURE VTS40-13 (63026)		EA	1	1-5 6-20 21-50 51-100	
X1 00046		SEAT ASSEMBLY: HIGH PRESSURE 0740-02 (63026)		EA	1		
X1 00047		HOLDER: SEAT 0746-02 (63026)		EA	1		
X1 00048		SEAT UNIT V50-37-1 (63026)		EA	1		
X1 00049	5310-887-8043	NUT: SEAT V50-36 (63026)		EA	1		
X1 00050		SEAT SR47-02 (63026)		EA	1		
X1 00051	4530-888-0057	STEM, NEEDLE VALVE 0744-02 (63026)		EA	1		
X1 00052		SEAT ASSEMBLY: HIGH PRESSURE 0740-03 (63026)		EA	1		
X1 00053		HOLDER: SEAT 0746-02 (63026)		EA	1		
X1 00054		SEAT UNIT V60-03-1 (63026)		EA	1		
X1 00055	5310-887-8043	NUT: SEAT V50-36 (63026)		EA	1		
X1 00056	5330-882-0595	WASHER, NONMETALLIC VTS40-02D (63026)		EA	1		
X1 00057		STEM VTS85-02A (63026)		EA	1		
X1 00058	5340-803-7635	SPACER, RING: SLIP, DIAPHRAGM, LOW PRESSURE 0705-02 (63026)		EA	1		

(1) SMR CODE	(2) FEDERAL STOCK NUMBER	(3) DESCRIPTION	(4) REFERENCE NO. & MFR. CODE	USABLE ON CODE	UNIT OF ISSUE	(5) QTY INC IN UNIT PACK	(6) QTY INC IN UNIT	(7) 15-DAY ORGANIZATIONAL MAINTENANCE ALW				(8) ILLUS- TRATION	
								(A)	(B)	(C)	(D)	(A) FIG NO.	(B) ITEM NO.
X1 00059		SPRING: ADJUSTING SV390-03 (63026)			EA		1						
X1 00060		SPRING: ADJUSTING, HIGH PRESSURE SV390-03 (63026)			EA		1						
X1 00061	5340-888-0058	SPRING, HELICAL, COMPRESSION: VALVE HIGH PRESSURE AND LOW PRESSURE 0762-02 (63026)			EA		2						
X1 00062		SWIVEL: INLET 0970-0101 (63026)			EA		1						
X1 00063	6680-072-6186	TUBE: THORPE 1015-08 (63026)			EA		1					1	3
X1 00064	4820-567-0408	VALVE: SAFETY 0600-300 (63026)			EA		1						
X1 00065		VALVE ASSEMBLY, CONTROL 1014-01 (63026)			EA		1						
X1 00066	5310-843-5586	WASHER, LOCK: VALVE STEM VTS50-07B (63026)			EA		1						
X1 00067	5310-766-9632	WASHER, SPLIT: FRICTION HIGH PRESSURE AND LOW PRESSURE 1408-44 (63026)			EA		2						
X2 00068		4407 - CONTROL PANELS, HOUSING, CUBICLES											
X2 00069		CONTROL ASSEMBLY: AC/DC 9G9359 (88725)			EA		1					2	
X2 00070		BASE: CABINET 827D037H02 (88725)			EA		1					2	24
X2 00071	5340-043-5621	BUSHING, RUBBER: CAPACITOR CLAMP TO CABINET MTG, CADMIUM OR ZINC CHROMATE, NO. 6-32 THD SIZE, 1/4 IN. LG			EA		1		SEE	GRP	4410		
X2 00072	5975-803-2536	BUSHING, STRAIN RELIEF: STRAIN, CURRENT SRBP1 (28520)			EA		1		SEE	GRP	4408		
P 00073	3431-875-7655	CABLE ASSEMBLY: CURRENT 59C1598G13 (88725)			EA		1		SEE	GRP	4408		

(1) SMR CODE INDEX NO.	(2) FEDERAL STOCK NUMBER	(3) DESCRIPTION REFERENCE NO. & MFR. CODE	(4) USABLE ON CODE UNIT OF ISSUE	(5) QTY INC IN UNIT PACK	(6) QTY INC IN UNIT	(7) 15-DAY ORGANIZATIONAL MAINTENANCE ALW				(8) ILLUS- TRATION	
						(A)	(B)	(C)	(D)	(A) FIG NO.	(B) ITEM NO.
P 0 00074	3431-875-7657	CABLE ASSEMBLY: GROUND 432C524G10 (88725)	EA		1		SEE	GRP		4408	
P 0 00075	3431-875-7656	CABLE ASSEMBLY: LINE 435C512G04 (88725)	EA		1		SEE	GRP		4408	
P 0 00076	5910-875-7888	CAPACITOR: ARMATURE RELAY 73P47306 (56289)	EA		2		SEE	GRP		4410	
X2 0 00077		CAPACITOR, FIXED, ELECTROLYTIC: WELDING GUN, RECEPTACLE TO LOAD RELAY BR30015 (14655)	EA		1		SEE	GRP		4410	
X2 0 00078		CLAMP: CAPACITOR TO CABINET MTG 1746613 (88725)	EA		1		SEE	GRP		4410	
X2 0 00079		CLAMP, LOOP 448A027H01 (88725)	EA		1						5 26
X2 0 00080		CLAMP, LOOP: CABLE TO BASE, RUBBER COVERED LOOP, 7/16 IN. ID OF LOOP, 1/16 IN. THK MATERIAL, 5/8 IN. WIDE, 11/16 IN. CENTER OF LOOP TO CENTER OF BOLT HOLE, U/W NO. 8 SCREW SIZE 1781453 (88725)	EA		4						2 33
X2 0 00081		CLIP, LOOP: NYLON FM10001, 3/8 IN. ID, 0.471 IN. CTR OF LOOP TO CTR OF HOLE, 0.227 IN. CTR OF HOLE TO END, 0.050 IN. THK, 0.375 IN. W, 0.177 IN. ID OF HOLE 52D9036H05 (88725)	EA		2						2 3
X2 O R 00082	3431-446-1961	CONTACTOR 31D9649COMBB00 (88725)	EA		1		SEE	GRP		4410	
X2 0 00083		ENCLOSURE 827D037G02 (88725)	EA		1						2 11
X2 0 00084		CABINET ASSEMBLY 827D037G01 (88725)	EA		1						2 7
X2 0 00085		GASKET 827D037G09 (88725)	EA		1						2 8
X2 0 00086		GROMMET 307B188H05 (88725)	EA		1						2 9

(1) SMR CODE	(2) FEDERAL STOCK INDEX NUMBER	(3) DESCRIPTION	(4) REFERENCE NO. & MFR. CODE	(5) QTY INC IN UNIT	(6) QTY INC IN UNIT	(7) 15-DAY ORGANIZATIONAL MAINTENANCE ALW (A) (B) (C) (D)	(8) ILLUS- TRATION (A) (B) FIG NO. NO.
X2 0 00087	5325-282-1884	STUD, TURNLOCK FASTENER A75-40 (72794)	EA		1		2 10
X2 0 00088		FISH PAPER: CONTACTOR FRAME TO MTG PANEL 6 1/8 IN. LG, 3 IN. WIDE, 0.034 IN. THK 448A043H01 (88725)	EA		1	SEE GRP	4410
X2 0 00089		FISH PAPER: CONTACTOR MTG PANEL TO CONTROL PANEL, 9 1/8 IN. LG, 3 IN. WIDE, 0.034 IN. THK 448A043H02 (88725)	EA		1		4 13
X2 0 00090		FITTING: GAS IN 419A050H01 (88725)	EA		1	SEE GRP	4408
X2 0 00091		FITTING: GAS OUT 419A049H01 (88725)	EA		1	SEE GRP	4408
F 0 00092	5920-280-4960	FUSE CARTRIDGE: LINE, 2 AMP 312002 (75915)	EA		4	SEE GRP	4409
F 0 00093	5920-065-3255	FUSE CARTRIDGE: MOTOR, 1 AMP 312001 (75915)	EA		2	SEE GRP	4409
F 0 00094	5920-556-0144	FUSE HOLDER: MOTOR AND LINE 427C612H02 (88725)	EA		3	SEE GRP	4409
X2 0 00095		KNOB 1228720 (88725)	EA		1	SEE GRP	4411
0 00096	5310-208-4074	NUT, PLAIN, HEXAGON: CAPACITOR CLAMP TO CABINET MTG CADMIUM PLATED, NO. 6-32 THD SIZE	EA		1	SEE GRP	4410
0 00097	5310-934-9757	NUT, PLAIN, HEXAGON: CLAMP SCREW TO BASE MTG	EA		3	* * * *	2 5
0 00098	5310-934-9757	NUT, PLAIN, HEXAGON: CONTROL PANEL TO CABINET MTG	EA		2	* * * *	5 7
0 00099	5310-934-9757	NUT, PLAIN, HEXAGON: LOOP CLAMP TO CABINET MTG, CADMIUM OR ZINC CHROMATE, NO. 8-32 THD SIZE	EA		2	* * * *	2 5
0 00100	5310-207-9272	NUT, PLAIN, HEXAGON: RECTIFIER TO CONTROL PANEL MTG, CADMIUM OR ZINC PLATED, NO. 10-32 THD SIZE	EA		1	SEE GRP	4413

(1) SMR CODE	(2) FEDERAL STOCK INDEX NUMBER	(3) DESCRIPTION	(4) USABLE ON CODE	(5) QTY INC IN UNIT	(6) QTY INC IN UNIT	(7) 15-DAY ORGANIZATIONAL MAINTENANCE ALW (A) (B) (C) (D)	(8) ILLUS- TRATION (A) (B) FIG ITEM NO. NO.
		REFERENCE NO. & MFR. CODE				1-5 6-20 21-50 51-100	
0 00101	5310-934-9757	NUT, PLAIN, HEXAGON: RELAY TO CABINET MTG, CADMIUM OR ZINC CHROMATE NO. 8-32 THD SIZE	EA		2	SEE GRP	4410
0 00102	5310-851-2674	NUT, PLAIN, HEXAGON: RESISTOR TO CONTROL PANEL MTG, CADMIUM OR ZINC PLATED, 1/4-20 THD SIZE	EA		2	SEE GRP	4411
0 00103	5310-934-9757	NUT, PLAIN, HEXAGON: TERMINAL STRIP TO CABINET MTG, CADMIUM OR ZINC CHROMATE, NO. 8-32 THD SIZE	EA		4	SEE GRP	4408
X2 0 00104		PANEL: CONTROL 637C249H01 (88725)	EA		1		5 5
X2 0 00105		PANEL: CONTROL, CONTRACTOR 637C251H01 (88725)	EA		1	SEE GRP	4411
M 0 00106		PANEL, SIDE: CONTROL MANUFACTURE FROM:	EA		1		2 27
P 0 00107	9515-331-0465	STEEL SHEET, CARBON, HOT ROLLED (14-1/2 IN. X 12-7/16 IN. REQUIRED)	SH			SEE GRP	9500
X2 0 00108		PIPE: SOLENOID VALVE, INLET 419A015H02 (88725)	EA		1	SEE GRP	4408
X2 0 00109		PIPE: SOLENOID VALVE, OUTLET 419A015H07 (88725)	EA		1	SEE GRP	4408
P 0 00110	3431-875-7653	RECEPTACLE, WELDING GUN POWER SUPPLY 419A012H01 (88725)	EA		1	SEE GRP	4408
P 0 00111	5961-794-9862	RECTIFIER, SEMICONDUCTOR DEVICE 508C516H60 (88725)	EA		1	SEE GRP	4413
P 0 00112	5945-259-5683	RELAY, ARMATURE: W/110V, DC COIL, 2 CIRCUIT FR11D (77342)	EA		1	SEE GRP	4410
P 0 00113	5945-875-7889	RELAY ASSEMBLY: LOAD 320B224G01 (88725)	EA		1	SEE GRP	4410
P 0 00114	5945-875-7884	RELAY: W/110V, DC COIL, 4 CIRCUIT 422A471H11 (88725)	EA		1	SEE GRP	4410

(1) SMR CODE	(2) FEDERAL STOCK INDEX NUMBER	(3) DESCRIPTION	(4) REFERENCE NO. & MFR. CODE	(5) QTY INC IN UNIT	(6) QTY INC IN UNIT	(7) 15-DAY MAINTENANCE ORGANIZATIONAL ALW (A) (B) (C) (D)	(8) ILLUS- TRATION (A) (B) FIG ITEM NO. NO.
X2 0 00115		RELIEF: STRAIN, GUN 422A526G03 (88725)	EA		1	SEE GRP 4408	
X2 0 00116		RELIEF: STRAIN, LINE SR6P1 (77342)	EA		1	SEE GRP 4408	
X2 0 00117	5975-889-5118	RELIEF: STRAIN, ROUND SR2M1 (28520)	EA		1	SEE GRP 4408	
P 0 00118	5905-875-7883	RESISTOR, ADJUSTABLE MOTOR VOLTAGE SUPPLY 422A473H05 (88725)	EA		1	SEE GRP 4411	
P 0 00119	5905-875-7886	RESISTOR: ARMATURE RELAY TO LOAD RELAY 422A473H03 (88725)	EA		1	SEE GRP 4411	
P 0 00120	5905-875-7887	RESISTOR: CONTROL PANEL 422A473H04 (88725)	EA		1	SEE GRP 4411	
P 0 00121	5905-875-7890	RESISTOR: FUSEHOLDER TO LOAD RELAY 557D436H33 (88725)	EA		1	SEE GRP 4411	
P 0 00122	5905-875-7881	REHOSSTAT, WELDING WIRE FEED CONTROL 422A460H01 (88725)	EA		1	SEE GRP 4411	
0 00123	5305-614-3423	SCREW, MACHINE: CLAMP TO BASE MTG, CADMIUM OR ZINC PLATED, NO. 8-32 THD SIZE, 3/8 IN. LG	EA		3	* * * * 2	25
0 00124	5305-577-5517	SCREW, MACHINE: CONTROL PANEL TO CABINET MTG, CADMIUM OR ZINC PLATED, NO. 8-32 THD SIZE, 3/8 IN. LG	EA		2	* * * * 5	25
0 00125	5305-939-9232	SCREW, MACHINE: LOOP CLAMP TO CABINET MTG, CORROSION RESISTING, NO. 8-32 THD SIZE, 5/8 IN. LG	EA		1	* * * * 2	15
0 00126	5305-622-9476	SCREW, MACHINE: RELAY TO CABINET MTG, CADMIUM OR ZINC PLATED, NO. 8-32 THD SIZE, 5/8 IN. LG	EA		2	SEE GRP 4410	
0 00127	5305-543-2665	SCREW, MACHINE: RESISTOR TO CONTROL PANEL MTG, CADMIUM OR ZINC PLATED, 1/4-20 THD SIZE, 3/8 IN. LG	EA		2	SEE GRP 4411	
0 00128	5305-622-9486	SCREW, MACHINE: SOLENOID VALVE TO CABINET MTG, CADMIUM OR ZINC PLATED, NO. 10-32 THD SIZE, 1-1/4 IN. LG	EA		2	SEE GRP 4410	

(1) SMR CODE	(2) FEDERAL STOCK NUMBER	(3) DESCRIPTION	(4) USABLE ON CODE	(5) QTY INC IN UNIT PACK	(6) QTY INC IN UNIT	(7) 15-DAY MAINTENANCE ALW (A)	ORGANIZATIONAL (B)	ALW (C)	(D)	(8) ILLUS- TRATION (A) FIG NO.	(B) ITEM NO.
		REFERENCE NO. & MFR. CODE				1-5	6-20	21-50	51-100		
0 00129	5305-622-9478	SCREW, MACHINE: TERMINAL STRIP TO CABINET MTG, CADMIUM OR ZINC PLATED, NO. 8-32 THD SIZE, 1 IN. LG	EA		1		SEE	GRP	4408		
0 00130	5305-151-0372	SCREW, MACHINE: TERMINAL STRIP TO CABINET MTG, CADMIUM OR ZINC PLATED NO. 8-32 THD SIZE, 1-1/8 IN. LG	EA		1		SEE	GRP	4408		
0 00131	5305-939-9232	SCREW, MACHINE: TERMINAL STRIP TO CABINET MTG, CORROSION RESISTING, NO. 8-32 THD SIZE, 5/8 IN. LG	EA		2		SEE	GRP	4408		
0 00132	5305-017-2125	SCREW, TAPPING, THREAD CUTTING: RELAY AND ARMATURE RELAY TO PANEL MTG, CADMIUM OR ZINC PLATED, NO. 6-32 THD SIZE, 3/4 IN. LG	EA		4		SEE	GRP	4410		
0 00133	5305-809-5978	SCREW, TAPPING, THREAD FORMING: CONTROL PANEL TO SIDE PANEL MTG, CADMIUM OR ZINC PLATED, NO. 6-32 THD SIZE, 3/8 IN. LG	EA		2	*	*	*	*	5	3
0 00134	5305-016-9450	SCREW, TAPPING, THREAD FORMING: PANEL MTG, CADMIUM OR ZINC PLATED, NO. 6-32 THD SIZE, 3/8 IN. LG	EA		12	*	*	*	*	2	26
0 00135	5305-809-5978	SCREW, TAPPING, THREAD FORMING: RESISTOR TO CONTROL PANEL MTG, CADMIUM OR ZINC PLATED, NO. 6-32 THD SIZE, 3/8 IN. LG	EA		2		SEE	GRP	4411		
M 0 00136		SPACER: SOLENOID VALVE TO CABINET MTG	EA		2		SEE	GRP	4410		
P 0 00137	5930-875-7882	SWITCH, CONTROL PANEL: LINE 429A051H02 (88725)	EA		1		SEE	GRP	4410		
P 0 00138	3431-858-3080	TERMINAL STRIP 32B1029H15 (88725)	EA		1		SEE	GRP	4408		
P 0 00139	3431-875-7658	VALVE, SOLENOID 422A472H02 (88725)	EA		1		SEE	GRP	4410		
0 00140	5310-809-8544	WASHER, FLAT: CLAMP SCREW TO BASE MTG, CADMIUM OR ZINC CHROMATE, 0.188 IN. ID, 0.375 IN. OD, 0.049 IN. THK	EA		3	*	*	*	*	2	36
0 00141	5310-836-2458	WASHER, LOCK: CAPACITOR CLAMP TO CABINET MTG, CADMIUM OR ZINC PLATED 0.128 IN. ID, 0.239 IN. OD, 0.031 IN. THK	EA		1		SEE	GRP	4410		
0 00142	5310-045-3296	WASHER, LOCK: CLAMP SCREW TO BASE MTG, CADMIUM OR ZINC CHROMATE, 0.194 IN. ID, 0.337 IN. OD, 0.047 IN. THK	EA		4	*	*	*	*	2	4

(1) SMR CODE	(2) FEDERAL STOCK NUMBER	(3) DESCRIPTION	(4) USABLE ON CODE	(5) QTY INC IN UNIT	(6) QTY INC IN UNIT	(7) 15-DAY ORGANIZATIONAL MAINTENANCE ALW				(8) ILLUS- TRATION	
						(A)	(B)	(C)	(D)	(A) FIG NO.	(B) ITEM NO.
0 00143	5310-836-2458	REFERENCE NO. & MFR. CODE WASHER, LOCK: CONTROL PANEL TO SIDE PANEL MTG, CADMIUM OR ZINC CHROMATE, 0.128 IN. ID, 0.239 IN. OD, 0.031 IN. THK	EA		4	*	*	*	*	5	4
0 00144	5310-045-3299	WASHER, LOCK: RECTIFIER TO CONTROL PANEL MTG, CADMIUM OR ZINC PLATED, 0.168 IN. ID, 0.296 IN. OD, 0.040 IN. THK	EA		1		SEE	GRP		4413	
0 00145	5310-045-3296	WASHER, LOCK: RELAY TO CABINET MTG, CADMIUM OR ZINC CHROMATE, 0.194 IN. ID, 0.337 IN. OD, 0.047 IN. THK	EA		2		SEE	GRP		4410	
0 00146	5310-637-9541	WASHER, LOCK: RESISTOR TO CONTROL PANEL MTG, CADMIUM OR ZINC PLATED, 0.382 IN. ID, 0.688 IN. OD, 0.094 IN. THK	EA		2		SEE	GRP		4411	
0 00147	5310-045-3299	WASHER, LOCK: SOLENOID VALVE TO CABINET MTG, CADMIUM OR ZINC, PLATED, 0.168 IN. ID, 0.296 IN. OD, 0.040 IN. THK	EA		2		SEE	GRP		4410	
0 00148	5310-527-3288	WASHER, LOCK: TERMINAL-STRIP TO CABINET MTG, CADMIUM OR ZINC CHROMATE, 0.200 IN. ID, 0.373 IN. OD, 0.023 IN. THK	EA		1		SEE	GRP		4408	
M 0 00149		WIRING HARNESS: CONTROL MANUFACTURE FROM:	EA		1						
X2 0 00150	5940-283-5280	TERMINAL, LUG: COPPER, TINNED FINISH, NO. 16-14 AWG, FOR NO. 5 OR 6 SCREW SIZE	EA		32						
P 0 00151	6145-160-4968	WIRE, ELECTRICAL (4 FT. REQUIRED)	FT				SEE	GRP		9501	
P 0 00152	6145-170-3521	WIRE, ELECTRICAL (24 IN. REQUIRED)	FT				SEE	GRP		9501	
P 0 00153	6145-170-6872	WIRE, ELECTRICAL (4 FT. REQUIRED)	FT				SEE	GRP		9501	
P 0 00154	6145-160-4968	WIRE, ELECTRICAL (24 IN. REQUIRED)	FT				SEE	GRP		9501	
P 0 00155	6145-235-1007	WIRE, ELECTRICAL (24 IN. REQUIRED)	FT				SEE	GRP		9501	
P 0 00156	6145-295-0806	WIRE, ELECTRICAL (4 FT. REQUIRED)	FT				SEE	GRP		9501	
P 0 00157	6145-295-1271	WIRE, ELECTRICAL (4 FT. REQUIRED)	FT				SEE	GRP		9501	
P 0 00158	6145-295-1273	WIRE, ELECTRICAL (4 FT. REQUIRED)	FT				SEE	GRP		9501	

(1) SMR CODE	(2) FEDERAL STOCK NUMBER	(3) DESCRIPTION	(4) USABLE ON CODE	(5) QTY INC IN UNIT PACK	(6) QTY INC IN UNIT	(7) 15-DAY ORGANIZATIONAL MAINTENANCE ALW				(8) ILLUS- TRATION	
						(A)	(B)	(C)	(D)	(A) FIG NO.	(B) ITEM NO.
		REFERENCE NO. & MFR. CODE				1-5	6-20	21-50	51-100		
00159		4408 - CONNECTING DEVICES									
X2 0 00160	5975-803-2536	BUSHING, STRAIN RELIEF: STRAIN, CURRENT SR8P1 (28520)	EA		1					2	39
P 0 00161	3431-875-7624	CABLE ASSEMBLY: CURRENT 310B142G01 (88725)	EA		1	*	*	*	*	6	7
P 0 00162	3431-875-7655	CABLE ASSEMBLY: CURRENT 59C1598G13 (88725)	EA		1	*	*	*	*	2	28
P 0 00163	3431-875-7657	CABLE ASSEMBLY: GROUND 432C524G10 (88725)	EA		1	*	*	*	*	2	30
P 0 00164	3431-875-7656	CABLE ASSEMBLY: LINE 435C512G04 (88725)	EA		1	*	*	*	*	2	1
X2 0 00165		FITTING: GAS IN 419A050H01 (88725)	EA		1					2	29
X2 0 00166		FITTING: GAS OUT 419A049H01 (88725)	EA		1					2	35
P 0 00167	3431-875-7625	HOSE ASSEMBLY: GAS 432C506G01 (88725)	EA		1	*	*	*	*	6	8
0 00168	4730-014-4574	LOCKNUT, PIPE: GAS INLET AND OUTLET PIPE TO CABINET MTG, ZINC PLATED, 1/8-27 THD SIZE	EA		2	*	*	*	*	3	4
0 00169	4730-014-0561	LOCKNUT, PIPE: GUN RELIEF STRAIN MTG, 1/2-14 THD SIZE	EA		1	*	*	*	*	2	34
0 00170	5310-934-9757	NUT, PLAIN, HEXAGON: TERMINAL STRIP TO CABINET MTG, CADMIUM OR ZINC CHROMATE, NO. 8-32 THD SIZE	EA		4	*	*	*	*	2	5
X2 0 00171		PIPE: SOLENOID VALVE, INLET 419A015H02 (88725)	EA		1					3	5
X2 0 00172		PIPE: SOLENOID VALVE, OUTLET 419A015H07 (88725)	EA		1					3	7
P 0 00173	3431-875-7653	RECEPTACLE, WELDING GUN POWER SUPPLY 419A012H401 (88725)	EA		1	*	*	*	*	2	23

(1) SMR CODE	(2) FEDERAL STOCK NUMBER	(3) DESCRIPTION	(4) USABLE ON CODE	(5) QTY INC IN UNIT PACK	(6) QTY INC IN UNIT	(7) 15-DAY ORGANIZATIONAL MAINTENANCE ALW (A) (B) (C) (D)	(8) ILLUS- TRATION (A) (B) FIG NO. ITEM NO.
		REFERENCE NO. & MFR. CODE				1-5 6-20 21-50 51-100	
0	4730-014-0561	LOCKNUT, PIPE: RECEPTACLE MTG, 1/2-14 THD SIZE	EA	1		* * * *	2 34
00174							
X2 0	5975-889-5118	RELIEF: STRAIN, GROUND	EA	1			2 31
00175		SR2M1 (28520)					
X2 0		RELIEF: STRAIN, GUN	EA	1			2 16
00176		422A526G03 (88725)					
X1		LOCKNUT: STRAIN RELIEF, 3/8 IN. CONDUIT	EA	1			
00177		422A526H02 (88725)					
X1		SEALING GRIP: STRAIN RELIEF	EA	1			
00178		422A526H04 (88725)					
X2 0		RELIEF: STRAIN, LINE	EA	1			2 2
00179		SR6P1 (77342)					
0	5305-622-9478	SCREW, MACHINE: TERMINAL STRIP TO CABINET MTG, CADMIUM OR ZINC PLATED, NO. 8-32 THD SIZE, 1 IN. LG	EA	1		* * * *	2 12
00180							
0	5305-151-0372	SCREW, MACHINE: TERMINAL STRIP TO CABINET MTG, CADMIUM OR ZINC PLATED, NO. 8-32 THD SIZE, 1-1/8 IN. LG	EA	1		* * * *	2 14
00181							
0	5305-939-9232	SCREW, MACHINE: TERMINAL STRIP TO CABINET MTG, CORROSION RESISTING, NO. 8-32 THD SIZE, 5/8 IN. LG	EA	2		* * * *	2 15
00182							
P 0	3431-858-3080	TERMINAL STRIP	EA	1		* * * *	2 6
00183		32B1029H15 (88725)					
0	5310-045-3296	WASHER, LOCK: TERMINAL STRIP MTG, CADMIUM OR ZINC CHROMATE, 0.194 IN. ID, 0.374 IN. OD, 0.049 IN. THK	EA	1		* * * *	2 13
00184							
0	5310-527-3288	WASHER, LOCK: TERMINAL STRIP TO CABINET MTG, CADMIUM OR ZINC CHROMATE, 0.200 IN. ID, 0.373 IN. OD, 0.023 IN. THK	EA	1		* * * *	2 4
00185							

(1) SMR CODE	(2) FEDERAL STOCK NUMBER	(3) DESCRIPTION	(4) USABLE ON CODE	(5) QTY INC IN UNIT PACK	(6) QTY INC IN UNIT	(7) 15-DAY ORGANIZATIONAL MAINTENANCE ALW				(8) ILLUS- TRATION	
						(A)	(B)	(C)	(D)	(A) FIG NO.	(B) ITEM NO.
		REFERENCE NO. & MFR. CODE				1-5	6-20	21-50	51-100		
00186		4409 - PROTECTIVE DEVICES, ELECTRICAL									
P 0 00187	5920-280-4960	FUSE, CARTRIDGE: LINE 2 AMP 312002 (75915)	EA		4	*	2	3	6	2	19
P 0 00188	5920-065-3255	FUSE, CARTRIDGE: MOTOR 1 AMP 312001 (75915)	EA		2	*	2	2	4	2	18
P 0 00189	5920-556-0144	FUSEHOLDER: MOTOR AND LINE 427C612H02 (88725)	EA		3	*	*	*	*	2	17
00190		4410 - SWITCHING, TIMING AND SPEED CONTROL									
P 0 00191	5910-875-7888	CAPACITOR: ARMATURE RELAY 1600323 (88725)	EA		2	*	2	2	2	5	18
X2 0 00192		CAPACITOR, FIXED, ELECTROLYTIC: WELDING GUN RECEPTACLE TO LOAD RELAY BR30015 (14655)	EA		1					3	11
P 0 00193	5910-668-3725	CAPACITOR: INSULATED TERMINAL TO ARMATURE RELAY 1 UF, 400V + 20%, DC FJ4P1 (14655)	EA		1	*	*	2	2	5	24
X2 0 00194		CLAMP: CAPACITOR TO CABINET MTG 1746613 (88725)	EA		1					3	14
X2 0 00195	3431-446-1961	CONTACTOR 31D9649COMBB00(88725)	EA		1					4	
X1 00196		BASE 1419592 (88725)	EA		1						
X1 00197		BOX ASSEMBLY: ARC 1490517 (88725)	EA		1					4	2
X1 00198		COIL: BLOW OUT AND ARC HORN ASSEMBLY 1490509 (88725)	EA		1					4	10
X1 00199		CONNECTOR 1257356 (88725)	EA		1						
X1 00200		CORE 1257371 (88725)	EA		1						

(1) SMR CODE	(2) FEDERAL STOCK INDEX NUMBER	(3) DESCRIPTION	(4) REFERENCE NO. & MFR. CODE	(5) QTY INC IN UNIT	(6) QTY INC IN UNIT	(7) 15-DAY ORGANIZATIONAL MAINTENANCE ALW (A) (B) (C) (D)	(8) ILLUS- TRATION (A) (B) FIG ITEM NO. NO.
X1 00201		FRAME ASSEMBLY 1289431 (88725)	EA		1		
X1 00202		HOLDER: CONTACT SPRING 1419587 (88725)	EA		1		
X1 00203	5970-367-1250	INSULATION: TUBE 1257373 (88725)	EA		1		
X1 00204		LATCH 1419590 (88725)	EA		1		
X1 00205		PIN: DOWEL 552D181H45 (88725)	EA		3		
X1 00206		PLATE: ARMATURE 1257344 (88725)	EA		1		4 3
X1 00207		PLATE: NAME, CONTACTOR 55955 (88725)	EA		1		
X1 00208		PLATE: NON-MAGNETIC 1257402 (88725)	EA		1		
X1 00209	5945-367-1227	POLE FACE 1257462 (88725)	EA		1		
X1 00210	5945-367-1226	POLE PIECE 1257366 (88725)	EA		1		
X1 00211	5945-366-7377	POLE PIECE 1257367 (88725)	EA		1		
X1 00212		RETAINING WASHER 1486999 (88725)	EA		1		4 11
X1 00213	5305-253-5609	SCREW, DRIVE: NAMEPLATE, CADMIUM OR ZINC PLATED, NO. 2, 1/8 IN. LG	EA		2		
X1 00214	5305-286-1494	SCREW, MACHINE: ARMATURE PLATE MTG, CADMIUM OR ZINC PLATED, 1/4-20 THD SIZE, 1/2 IN. LG	EA		2		4 4
X1 00215	5305-017-3397	SCREW, MACHINE: CADMIUM OR ZINC PLATED, 1/4-20 THD SIZE, 5/8 IN. LG	EA		1		

(1) SMR CODE	(2) FEDERAL STOCK NUMBER	(3) DESCRIPTION REFERENCE NO. & MFR. CODE	(4) USABLE ON CODE	UNIT OF	ISSUE	(5) QTY INC IN UNIT	(6) QTY INC IN PACK	(7) 15-DAY ORGANIZATIONAL MAINTENANCE ALW				(8) ILLUS- TRATION	
								(A)	(B)	(C)	(D)	(A) FIG NO.	(B) ITEM NO.
X1 00216	5305-017-7355	SCREW, MACHINE: COIL MTG, CADMIUM OR ZINC PLATED, 1/4-28 THD SIZE, 1/2 IN. LG		EA			1					4	7
X1 00217	5305-952-0760	SCREW, MACHINE: CONTACT MTG, CADMIUM OR ZINC PLATED, 1/4-28 THD SIZE, 3/8 IN. LG		EA			2					4	23
X1 00218	5305-616-4831	SCREW, MACHINE: CONTACTOR TO MTG PLATE, CADMIUM OR ZINC PLATED, NO. 10-32 THD SIZE, 3/4 IN. LG		EA			2					4	20
X1 00219	5305-954-8151	SCREW, MACHINE: LEAD ATTACHING, BRASS, NO. 10-32 THD SIZE, 1/4 IN. LG		EA			1					4	21
X1 00220		SHUNT 1689647G02 (88725)		EA			1						
X1 00221	5945-366-7343	STOP: ARMATURE 1257363 (88725)		EA			1						
X1 00222		STUD 552D181H55 (88725)		EA			1						
X1 00223		SUPPORT: KICKOUT SPRING 1257399 (88725)		EA			1						
X1 00224		TERMINAL: FRONT CONNECTION 1385866G02 (88725)		EA			2					4	1
X1 00225	5310-812-0992	WASHER, FLAT: COIL MTG, CADMIUM PLATED, 1/4 IN. ID, 1 1/8 IN. OD, 0.063 IN. THK		EA			1					4	9
X1 00226	5310-044-6179	WASHER, FLAT: CONTACT MTG, CADMIUM OR ZINC CHROMATE, 0.255 IN. ID, 0.500 IN. OD, 0.049 IN. THK		EA			2					4	6
X1 00227	5310-167-0765	WASHER, FLAT: CONTACTOR SCREW MTG, CADMIUM PLATED, 0.194 IN. ID, 7/8 IN. OD, 1/16 IN. THK		EA			2					4	18
X1 00228		WASHER: INSULATION 1257374 (88725)		EA			2						
X1 00229	5310-550-1130	WASHER, LOCK: CADMIUM OR ZINC CHROMATE, 0.262 IN. ID, 0.469 IN. OD, 0.025 IN. THK		EA			1					4	8

(1) SMR CODE	(2) FEDERAL STOCK NUMBER	(3) DESCRIPTION	(4) REFERENCE NO. & MFR. CODE	(5) QTY INC IN UNIT	(6) QTY INC IN UNIT	(7) 15-DAY ORGANIZATIONAL MAINTENANCE ALW (A) (B) (C) (D)	(8) ILLUS- TRATION (A) (B) FIG NO. NO.
X1 00230	5310-582-5965	WASHER, LOCK: CONTACT MTG, CADMIUM OR ZINC CHROMATE, 0.255 IN. ID, 0.493 IN. OD, 0.062 IN. THK	EA		2		4 5
X1 00231	5310-012-1841	WASHER, LOCK: CONTACTOR SCREW MTG, CADMIUM OR ZINC PLATED, 0.168 IN. ID, 0.296 IN. OD, 0.040 IN. THK	EA		2		4 19
X1 00232	5310-527-3288	WASHER, LOCK: LEAD SCREW ATTACHING CADMIUM OR ZINC CHROMATE, 0.200 IN. ID, 0.373 IN. OD, 0.023 IN. THK	EA		3		4 22
X1 00233		WASHER: MICA 208A560H05 (88725)	EA		1		
X2 O 00234		FISH PAPER: CONTACTOR FRAME TO MOUNTING PANEL, 6-1/8 IN. LG, 3 IN. W, 0.034 IN. THK 448A043H01 (88725)	EA		1		4 17
M O 00235		LEAD, ELECTRICAL: RELAY GROUND MANUFACTURE FROM:	EA		1		5 19
X2 O 00236	5940-549-1973	TERMINAL, LUG: NO. 16 TO NO. 22 AWG, 25/32 IN. LG, 7/16 IN. W, 1/4 IN. THK	EA		2		
P O 00237	6145-164-7026	WIRE, ELECTRICAL (6 IN. REQUIRED)	FT			SEE GRP 9501	
O 00238	5310-208-4074	NUT, FLAIN, HEXAGON: CAPACITOR CLAMP TO CABINET MTG, CADMIUM PLATED, NO. 6-32 THD SIZE	EA		1	* * * *	3 12
O 00239	5310-934-9757	NUT, FLAIN, HEXAGON: RELAY TO CABINET MTG, CADMIUM OR ZINC CHROMATE, NO. 8-32 THD SIZE	EA		2	* * * *	3 1
O 00240		NUT: WELL, CONTACTOR MTG, RUBBER W/BRASS THREADED INSERT, 3/8-16 THD SIZE, SHOULDERED, 3/4 IN. OD, OF SMALL SHOULDER, 11/16 IN. HIGH, 1-3/4 IN. OD OF LARGE SHOULDER, 3/8 IN. HIGH, 1-1/16 IN. OVER-ALL 419A065H01 (88725)	EA		2	* * * *	4 15
X2 O 00241		PANEL: CONTROL, CONTACTOR 637C251H01 (88725)	EA		1		4 16
P O 00242	5945-259-5683	RELAY, ARMATURE: W/110V, DC COIL, 2 CIRCUIT FR11D (77342)	EA		1	* * * *	5 20
P O 00243	5945-875-7889	RELAY ASSEMBLY: LOAD 320B224G01 (88725)	EA		1	* * * *	3 3

(1) SMR CODE	(2) FEDERAL STOCK NUMBER	(3) DESCRIPTION	(4) USABLE ON CODE	(5) QTY INC IN UNIT PACK	(6) QTY INC IN UNIT	(7) 15-DAY ORGANIZATIONAL MAINTENANCE ALW				(8) ILLUS- TRATION	
						(A)	(B)	(C)	(D)	(A) FIG NO.	(B) ITEM NO.
		REFERENCE NO. & MFR. CODE				1-5	6-20	21-50	51-100		
P O 00244	5945-875-7884	RELAY: W/110V, DC COIL, 4 CIRCUIT 422A471H11 (88725)	EA		1	*	*	*	*	5	27
X1 00245		COIL 320B222H01 (88725)	EA		1						
X1 00246		COIL ASSEMBLY: RELAY 320B222G01 (88725)	EA		1						
X1 00247		RELAY: SPST, ONE NORMAL OPEN CONTACT FR2949 (77342)	EA		1						
X1 00248		TERMINAL 320B222H02 (88725)	EA		1						
O 00249	5305-021-5453	SCREW, CAP, HEXAGON: CONTACTOR MTG, CADMIUM OR ZINC PLATED, 3/8-16 THD SIZE, 1-1/4 IN. LG	EA		2	*	*	*	*	4	12
O 00250	5305-543-5621	SCREW, MACHINE: CAPACITOR CLAMP TO CABINET MTG, CADMIUM OR ZINC CHROMATE, NO. 6-32 THD SIZE, 1/4 IN. LG	EA		1	*	*	*	*	3	15
O 00251	5305-543-5621	SCREW, MACHINE: INSULATED TERMINAL MTG	EA		1	*	*	*	*	5	22
O 00252	5304-622-9476	SCREW, MACHINE: RELAY TO CABINET MTG, CADMIUM OR ZINC CHROMATE, NO. 8-32 THD SIZE, 5/8 IN. LG	EA		2	*	*	*	*	3	16
O 00253	5305-622-9486	SCREW, MACHINE: SOLENOID VALVE TO CABINET MTG, CADMIUM OR ZINC PLATED, NO. 10-32 THD SIZE, 1-1/4 IN. LG	EA		2	*	*	*	*	3	10
O 00254	5305-017-2125	SCREW, TAPPING, THREAD CUTTING: RELAY AND ARMATURE RELAY TO PANEL MTG, CADMIUM OR ZINC PLATED, NO. 6-32 THD SIZE, 3/4 IN. LG	EA		4	*	*	*	*	5	28
M O 00255		SPACER: SOLENOID VALVE TO CABINET MANUFACTURE FROM:	EA		2	*	*	*	*	3	8
P O 00256	4710-162-1018	PIPE, STEEL (13/16 IN. REQUIRED FOR EACH SPACER)	FT				SEE	GRP	9501		
P O 00257	5930-875-7882	SWITCH, CONTROL PANEL: LINE 429A051H02 (88725)	EA		1	*	*	*	*	2	32
X2 O 00258		TERMINAL: INSULATED 1942F6 (71279)	EA		1					5	23

(1) SMR CODE INDEX NO.	(2) FEDERAL STOCK NUMBER	(3) DESCRIPTION REFERENCE NO. & MFR. CODE	(4) USABLE ON CODE UNIT OF ISSUE	(5) QTY INC IN UNIT PACK	(6) QTY INC IN UNIT	(7) 15-DAY ORGANIZATIONAL MAINTENANCE ALW				(8) ILLUS- TRATION	
						(A)	(B)	(C)	(D)	(A) FIG NO.	(B) ITEM NO.
P O 00259	3431-875-7658	VALVE, SOLENOID 422A472H02 (88725)	EA		1	*	*	*	*	3	6
O 00260	5310-082-1404	WASHER, FLAT: INSULATED TERMINAL MTG, CADMIUM OR ZINC CHROMATE, 0.156 IN. ID, 0.375 IN. OD, 0.049 IN. THK	EA		1	*	*	*	*	31	21
O 00261	5310-836-2458	WASHER, LOCK: CAPACITOR CLAMP TO CABINET MTG, CADMIUM OR ZINC PLATED, 0.128 IN. ID, 0.239 IN. OD, 0.031 IN. THK	EA		1	*	*	*	*	3	13
O 00262	5310-637-9541	WASHER, LOCK: CONTACTOR SCREW MTG, 0.382 IN. ID, 0.688 IN. OD, 0.094 IN. THK	EA		2	*	*	*	*	4	13
O 00263	5310-836-2458	WASHER, LOCK: INSULATED TERMINAL MTG	EA		1	*	*	*	*	5	4
O 00264	5310-045-3296	WASHER, LOCK: RELAY TO CABINET MTG, CADMIUM OR ZINC CHROMATE, 0.194 IN. ID, 0.337 IN. OD, 0.047 IN. THK	EA		2	*	*	*	*	3	2
O 00265	5310-045-3299	WASHER, LOCK: SOLENOID VALVE TO CABINET MTG, CADMIUM OR ZINC PLATED, 0.168 IN. ID, 0.296 IN. OD, 0.040 IN THK	EA		2	*	*	*	*	3	9
O 00266		4411 - RESISTORS									
X2 O 00267		KNOB 1228720 (88725)	EA		1					2	21
O 00268	5310-934-9757	NUT, PLAIN, HEXAGON: RESISTOR TO CONTROL PANEL MTG, CADMIUM OR ZINC CHROMATE, NO. 8-32 THD SIZE	EA		1	*	*	*	*	5	7
O 00269	5310-851-2674	NUT, PLAIN, HEXAGON: RESISTOR TO CONTROL PANEL MTG, CADMIUM OR ZINC PLATED, 1/4-20 THD SIZE	EA		2	*	*	*	*	5	8
P O 00270	5905-875-7883	RESISTOR, ADJUSTABLE MOTOR VOLTAGE SUPPLY: CONTROL PANEL 422A460H5 (88725)	EA		1	*	*	*	*	2	5 16
P O 00271	5905-875-7886	RESISTOR: ARMATURE RELAY TO LOAD RELAY 422A473H03 (88725)	EA		1	*	*	*	*	2	5 14
P O 00272	5905-875-7887	RESISTOR: CONTROL PANEL 422A473H04 (88725)	EA		1	*	*	*	*	2	5 11

(1) SMR CODE	(2) FEDERAL STOCK NUMBER	(3) DESCRIPTION	(4) REFERENCE NO. & MFR. CODE	(5) QTY INC IN UNIT PACK	(6) QTY INC IN UNIT	(7) 15-DAY ORGANIZATIONAL MAINTENANCE ALW				(8) ILLUS- TRATION	
						(A)	(B)	(C)	(D)	(A) FIG NO.	(B) ITEM NO.
P O 00273	5905-875-7890	RESISTOR: FUSEHOLDER TO LOAD RELAY 557D436H33 (88725)	EA	1	*	*	*	*	2	2	38
P O 00274	5905-875-7881	RHEOSTAT, WELDING WIRE FEED CONTROL 422A460H01 (88725)	EA	1	*	*	*	*	2	2	37
O 00275	5305-984-6203	SCREW, MACHINE: RESISTOR TO CONTROL PANEL MTG, CADMIUM OR ZINC PLATED, NO. 8-32 THD SIZE, 2-1/2 IN. LG	EA	1	*	*	*	*	*	5	13
O 00276	5305-543-2665	SCREW, MACHINE: RESISTOR TO CONTROL PANEL MTG, CADMIUM OR ZINC PLATED, 1/4-20 THD SIZE, 3/8 IN. LG	EA	2	*	*	*	*	*	5	15
O 00277	5305-809-5978	SCREW, TAPPING, THREAD FORMING: RESISTOR TO CONTROL PANEL MTG, CADMIUM OR ZINC PLATED, NO. 6-32 THD SIZE, 3/8 IN. LG	EA	2	*	*	*	*	*	5	3
O 00278	5310-205-7782	WASHER, FLAT: RESISTOR TO CONTROL PANEL MTG, 3/16 IN. ID, 7/16 IND. OD, 0.049 IN. THK	EA	1	*	*	*	*	*	5	12
O 00279	5310-045-3296	WASHER, LOCK: RESISTOR TO CONTROL PANEL MTG, CADMIUM OR ZINC CHROMATE, 0.194 IN. ID, 0.337 IN. OD, 0.047 IN. THK	EA	1	*	*	*	*	*	5	6
O 00280	5310-637-9541	WASHER, LOCK: RESISTOR TO CONTROL, PANEL MTG, CADMIUM OR ZINC PLATE, 0.382 IN. ID, 0.688 IN. OD, 0.094 IN. THK	EA	2	*	*	*	*	*	5	9
X2 O 00281	5330-694-2032	WASHER, NONMETALLIC: RESISTOR TO CONTROL PANEL MTG, FIBER, 13/64 IN. ID, 5/16 IN. OD, 1/16 IN. THK	EA	2						5	10
00282		4413 - RECTIFIERS									
O 00283	5310-207-9272	NUT, PLAIN, HEXAGON: RECTIFIER TO CONTROL PANEL MTG, CADMIUM OR ZINC PLATED, NO. 10-32 THD SIZE	EA	1	*	*	*	*	*	5	1
P O 00284	5961-794-9862	RECTIFIER, SEMICONDUCTOR DEVICE 508C516H60 (88725)	EA	1	*	2	2	2	2	5	17
O 00285	5310-045-3299	WASHER, LOCK: RECTIFIER TO CONTROL PANEL MTG, CADMIUM OR ZINC PLATED 0.168 IN. ID, 0.296 IN. OD, 0.040 IN. THK	EA	1	*	*	*	*	*	5	2

(1) SMR CODE	(2) FEDERAL STOCK NUMBER	(3) DESCRIPTION	(4) USABLE ON CODE	(5) QTY INC IN UNIT PACK	(6) QTY INC IN UNIT	(7) 15-DAY ORGANIZATIONAL MAINTENANCE ALW (A) (B) (C) (D)	(8) ILLUS- TRATION (A) (B) FIG ITEM NO. NO.
00286		4415 - HEAD, TORCH AND GUN UNITIZED COMPONENTS					
X2 O 00287	3431-929-0810	GUN ASSEMBLY: WELDING 21N5941 (88725)	EA		1		7
P O 00288	3431-875-7930	ADAPTER 419A003H01 (88725)	EA		1	* * * *	7 35
X2 O 00289		ADAPTER, STRAIGHT, PIPE TO HOSE: BRASS, SPECIAL 419A043H01 (88725)	EA		1		7 4
X2 O 00290		BARREL ASSEMBLY: GUN 419A002G01 (88725)	EA		1		7 28
X1 00291		BARREL: GUN 419A001H02 (88725)	EA		1		
X1 00292		LOG: CURRENT 419A001H01 (88725)	EA		1		
X2 O 00293		BOLT, MACHINE: BEARING ARM 419A025H01 (88725)	EA		1		7 19
X2 O 00294		BOLT, MACHINE: REEL COVER 419A029H01 (88725)	EA		1		7 16
P O 00295	3431-875-7641	BOOT 419A046H01 (88725)	EA		1	* * * *	6 5
X2 O 00296		BRACKET AND FITTING ASSEMBLY, MOUNTING 427C605G03 (88725)	EA		1		7 41
X2 O 00297		BRACKET ASSEMBLY 429C554G02 (88725)	EA		1		7 40
X1 00298		BRACKET, MOUNTING 429C554H04 (88725)	EA		1		
X1 00299		INSERT 429C554H03 (88725)	EA		1		

(1) SMR CODE	(2) FEDERAL STOCK INDEX NUMBER	(3) DESCRIPTION	(4) REFERENCE NO. & MFR. CODE	(5) QTY INC IN UNIT PACK	(6) QTY INC IN UNIT	(7) 15-DAY ORGANIZATIONAL MAINTENANCE ALW (A) (B) (C) (D)	(8) ILLUS- TRATION (A) (B) FIG NO. ITEM NO.
X2 O 00300		FITTING ASSEMBLY: GAS 427C605G04 (88725)			1		7 3
X2 O 00301	4730-639-9730	ELBOW PIPE: BRASS ONE END MALE, OTHER END FEMALE, 1/8-27 THD SIZE			1		7 2
X2 O 00302	4730-278-4829	ELBOW PIPE: 45 DEG, ONE END MALE, OTHER END FEMALE, 1/8-27 THD SIZE			1		7 1
P O 00303	3431-875-7651	BRACKET, REEL BRAKE SUPPORT 419A008H01 (88725)			1	* * * *	7 46
P O 00304	3431-446-2643	BRAKE: REEL 419A011H01 (88725)			1	* * * *	7 18
P O 00305	3431-446-2646	BUSHING, GUIDE: REAR 205A007H02 (88725)			1	* 2 2 4	7 45
P O 00306	3431-446-2645	BUSHING, SLEEVE: FRONT 220A338H03 (88725)			1	* 2 2 4	7 42
P O 00307	3431-875-7624	CABLE ASSEMBLY: CURRENT 310B142G01 (88725)			1	SEE GRP 4408	
P O 00308	3431-875-7652	COVER, WIRE REEL PROTECTING 311B711G01 (88725)			1	* * * *	7 15
X1 00309	3431-875-7652	COVER: REEL 637C247H01 (88725)			1		
P O 00310	5325-281-3536	GROMMET, RUBBER: 1/2 IN. ID, 1 IN. OD, 3/32 IN. THK 282498 (88725)			1	* * * *	7 5
P O 00311	3431-875-7627	HANDLE 557D467G03 (88725)			1	* * * *	
O 00312	5305-616-2529	SCREW, MACHINE: SHIELD TO BRACKET MTG, CADMIUM OR ZINC PLATED, NO. 6-32 THD SIZE, 3/8 IN. LG			3	* * * *	7 10
P O 00313	3431-875-7625	HOSE ASSEMBLY: GAS 432C506G01 (88725)			1	SEE GRP 4408	
P O 00314	3431-875-7643	INSULATION 419A010H01 (88725)			1	* * * *	7 38

(1) SMR CODE INDEX NO.	(2) FEDERAL STOCK NUMBER	(3) DESCRIPTION REFERENCE NO. & MFR. CODE	(4) USABLE ON CODE UNIT OF ISSUE	(5) QTY INC IN UNIT PACK	(6) QTY INC IN UNIT	(7) 15-DAY ORGANIZATIONAL MAINTENANCE ALW (A) (B) (C) (D)	(8) ILLUS- TRATION (A) (B) FIG NO. ITEM NO.
P O 00315	3431-875-7642	INSULATION, GUN BARREL 419A005H02 (88725)	EA	1	*	* * * * *	7 29
P O 00316	3431-446-2642	NOZZLE, GAS 311B703H02 (88725)	EA	1	2	7 13 25	7 34
O 00317	5310-723-4458	NUT, FLAIN, HEXAGON: DRIVE ROLL ATTACHING 1/4-20 THD SIZE	EA	1			6 1
P O 00318	3431-875-7633	ROLL, DRIVE 419A009G01 (88725)	EA	1	*	* * * * *	6 4
O 00319	5305-614-0241	SCREW, MACHINE: BEARING ARM MTG, CADMIUM OR ZINC PLATED, NO. 10-32 THD SIZE, 5/8 IN. LG	EA	1	*	* * * * *	7 26
O 00320	5305-013-1919	SCREW, MACHINE: BRACKET AND FITTING ASSEMBLY MTG, CADMIUM OR ZINC CHROMATED, NO. 6-32 THD SIZE, 1 IN. LG	EA	1	*	* * * * *	7 44
O 00321	5305-012-5519	SCREW, MACHINE: BRACKET AND FITTING ASSEMBLY MTG, CADMIUM OR ZINC PLATED, NO. 6-32 THD SIZE, 1-1/2 IN. LG	EA	3	*	* * * * *	7 37
X2 O 00322	5305-984-5676	SCREW, MACHINE: HOUSING TO GUN BARREL MTG, NO. 6-32 THD SIZE, 1/4 IN. LG 576D964H68 (88725)	EA	4			7 31
O 00323	5305-984-5676	SCREW, MACHINE: REEL SHAFT MTG, CADMIUM OR ZINC PLATED, 5/16-18 THD SIZE, 3/4 IN. LG	EA	1	*	* * * * *	7 11
O 00324	5305-855-0971	SCREW, TAPPING, THREAD CUTTING: BRAKE TO BRAKE SUPPORT MTG, CADMIUM OR ZINC PLATED NO. 4-40 THD SIZE, 1/4 IN. LG	EA	2	*	* * * * *	7 17
O 00325	5305-809-5978	SCREW, TAPPING, THREAD FORMING: BRAKE SUPPORT MTG, CADMIUM OR ZINC PLATED, NO. 6-32 THD SIZE, 3/8 IN. LG	EA	2	*	* * * * *	7 9
P O 00326	3431-875-7625	SCREW: THUMB 422A505G01 (88725)	EA	1	*	* * * * *	7 32
P O 00327	3431-446-2639	SEAL, WIRE FEED REEL SHAFT 76D964H07 (88725)	EA	2	*	* * * * *	7 14
O 00328	5305-719-5336	SETScrew: FRONT AND REAR GUIDE BUSHING TO BRACKET ATTACHING, NO. 8-32 THD SIZE, 1/8 IN. LG	EA	2	*	* * * * *	7 43

(1) SMR CODE	(2) FEDERAL STOCK INDEX NUMBER	(3) DESCRIPTION	(4) REFERENCE NO. & MFR. CODE	USABLE ON CODE	UNIT OF ISSUE	(5) QTY INC IN UNIT PACK	(6) QTY INC IN UNIT	(7) 15-DAY ORGANIZATIONAL MAINTENANCE ALW				(8) ILLUS- TRATION	
								(A)	(B)	(C)	(D)	(A) FIG NO.	(B) ITEM NO.
O 00329		SETScrew: 1/4-20 THD SIZE, 1/4 IN. LG 44A3880H45 (88725)			EA	1	*	*	*	*	7	39	
X2 O 00330		SHAFT: REEL 448A024H01 (88725)			EA	1					7	13	
X2 O 00331		SHIELD: REEL COVER 576D963G02 (88725)			EA	1					7	6	
P O 00332		SPRING, HELICAL, COMPRESSION 419A027H01 (88725)			EA	1	*	*	*	*	7	20	
X2 O 00333		STRAP: COPPER 576D964H64 (88725)			EA	1					6	6	
P O 00334	3431-875-7644	SWING ARM ASSEMBLY 310B141G01 (88725)			EA	1	*	*	*	*	7	24	
X2 O 00335		ARM: BEARING 419A026H02 (88725)			EA	1					7	21	
P O 00336	3431-875-7645	BEARING, IDLER ROLL 557D415H39 (88725)			EA	1	*	*	*	*	7	23	
P O 00337	3431-875-7646	SCREW: NYLON 442A169H01 (88725)			EA	1	*	*	*	*	7	25	
P O 00338	3431-446-2641	WASHER, WIRE PRESSURE ARM 310B141H04 (88725)			EA	2	*	*	*	*	7	22	
P O 00339	3431-446-2644	TUBE, GUIDE 306B172H09 (88725)			EA	1	*	2	2	4	7	36	
X2 O 00340		TUBE: GUN 419A004H01 (88725)			EA	1					7	33	
P O 00341	3431-875-7637	WASHER 419A006H01 (88725)			EA	2	*	*	*	*	7	27	
P O 00342	3431-875-7638	WASHER 419A006H02 (88725)			EA	1	*	*	*	*	7	30	

(1) SMR CODE INDEX NO.	(2) FEDERAL STOCK NUMBER	(3) DESCRIPTION REFERENCE NO. & MFR. CODE	(4) USABLE ON CODE UNIT OF ISSUE	(5) QTY INC IN UNIT PACK	(6) QTY INC IN UNIT	(7) 15-DAY ORGANIZATIONAL MAINTENANCE ALW (A) (B) (C) (D)	(8) ILLUS- TRATION (A) (B) FIG NO. ITEM NO.
O 00343	5310-147-2065	WASHER, FLAT: DRIVE ROLL ATTACHING, 0.265 IN. ID, 0.438 IN. OD, 0.040 IN. THK	EA	1	*	* * * *	6 3
O 00344	5310-639-1532	WASHER, FLAT: REEL SPACER, CADMIUM OR ZINC CHROMATE, 0.313 IN. ID, 0.875 IN. OD, 0.065 IN. THK	EA	1	*	* * * *	7 12
O 00345	5310-082-1404	WASHER, FLAT: SHIELD TO BRACKET, BRAKE SUPPORT MTG, CADMIUM OR ZINC CHROMATE, 0.156 IN. ID, 0.375 IN. OD, 0.049 IN. THK	EA	5	*	* * * *	7 7
O 00346	5310-013-1044	WASHER, LOCK: BRACKET AND FITTING ASSEMBLY MTG, CADMIUM OR ZINC PLATED, 0.141 IN. ID, 0.253 IN. OD, 0.031 IN. THK	EA	9	*	* * * *	7 8
O 00347	5310-010-3319	WASHER, LOCK: DRIVE ROLL ATTACHING, 0.255 IN. ID, 0.493 IN. OD, 0.062 IN. THK	EA	1	*	* * * *	6 2
00348		GROUP 95 - GENERAL USE STANDARDIZED PARTS					
00349		9501 - BULK MATERIAL					
P O 00350	4710-162-1018	PIPE, STEEL: 1/2 IN. DIA, 0.109 IN. WALL THK	FT			* * * *	
F O 00351	9515-331-0465	STEEL SHEET, CARBON, HOT ROLLED: 0.747 IN. THK, 36 IN. W, 120 IN. LG	SH			* * * *	
P O 00352	6145-170-3521	WIRE, ELECTRICAL: COPPER, TINNED FINISH, NO. 16 AWG, 16 STRANDS OF NO. 28 AWG, 0.129 IN. DIA.	FT			* * * *	
P O 00353	6145-170-6872	WIRE, ELECTRICAL: COPPER, TINNED FINISH, NO. 16 AWG, 16 STRANDS OF NO. 28 AWG, 0.129 IN. DIA.	FT			* * * *	
P O 00354	6145-235-1007	WIRE, ELECTRICAL: COPPER, TINNED FINISH, NO. 16 AWG, 16 STRANDS OF NO. 28 AWG, 0.129 IN. DIA.	FT			* * * *	
P O 00355	6145-164-7026	WIRE, ELECTRICAL: COPPER, TINNED FINISH, NO. 16 AWG, 19 STRANDS OF NO. 29 AWG, 0.102 IN. DIA.	FT			* * * *	
P O 00356	6145-295-0806	WIRE, ELECTRICAL: COPPER, TINNED FINISH, NO. 16 AWG, 19 STRANDS OF NO. 29 AWG, 0.102 IN. DIA.	FT			* * * *	
P O 00357	6145-295-1271	WIRE, ELECTRICAL: COPPER, TINNED FINISH, NO. 16 AWG, 19 STRANDS OF NO. 29 AWG, 0.102 IN. DIA.	FT			* * * *	

(1) SMR CODE	(2) FEDERAL STOCK NUMBER	(3) DESCRIPTION	(4) USABLE ON CODE	(5) QTY INC IN UNIT PACK	(6) QTY INC IN UNIT	(7) 15-DAY ORGANIZATIONAL MAINTENANCE ALW (A) (B) (C) (D)	(8) ILLUS- TRATION (A) (B) FIG ITEM NO. NO.
		REFERENCE NO. & MFR. CODE				1-5 6-20 21-50 51-100	
P O 00358	6145-295-1273	WIRE, ELECTRICAL: COPPER, TINNED FINISH, NO. 16 AWG, 19 STRANDS OF NO. 29 AWG, 0.102 IN. DIA.		FT		* * * *	
P O 00359	6145-160-4968	WIRE, ELECTRICAL: COPPER, TINNED FINISH, NO. 16 AWG, 19 STRANDS OF NO. 29 AWG, 0.130 IN. DIA.		FT		* * * *	
P O 00360	6145-160-4965	WIRE, ELECTRICAL: COPPER, TINNED FINISH, NO. 16 AWG, 19 STRANDS OF NO. 29 AWG, 0.130 IN. DIA.		FT		* * * *	

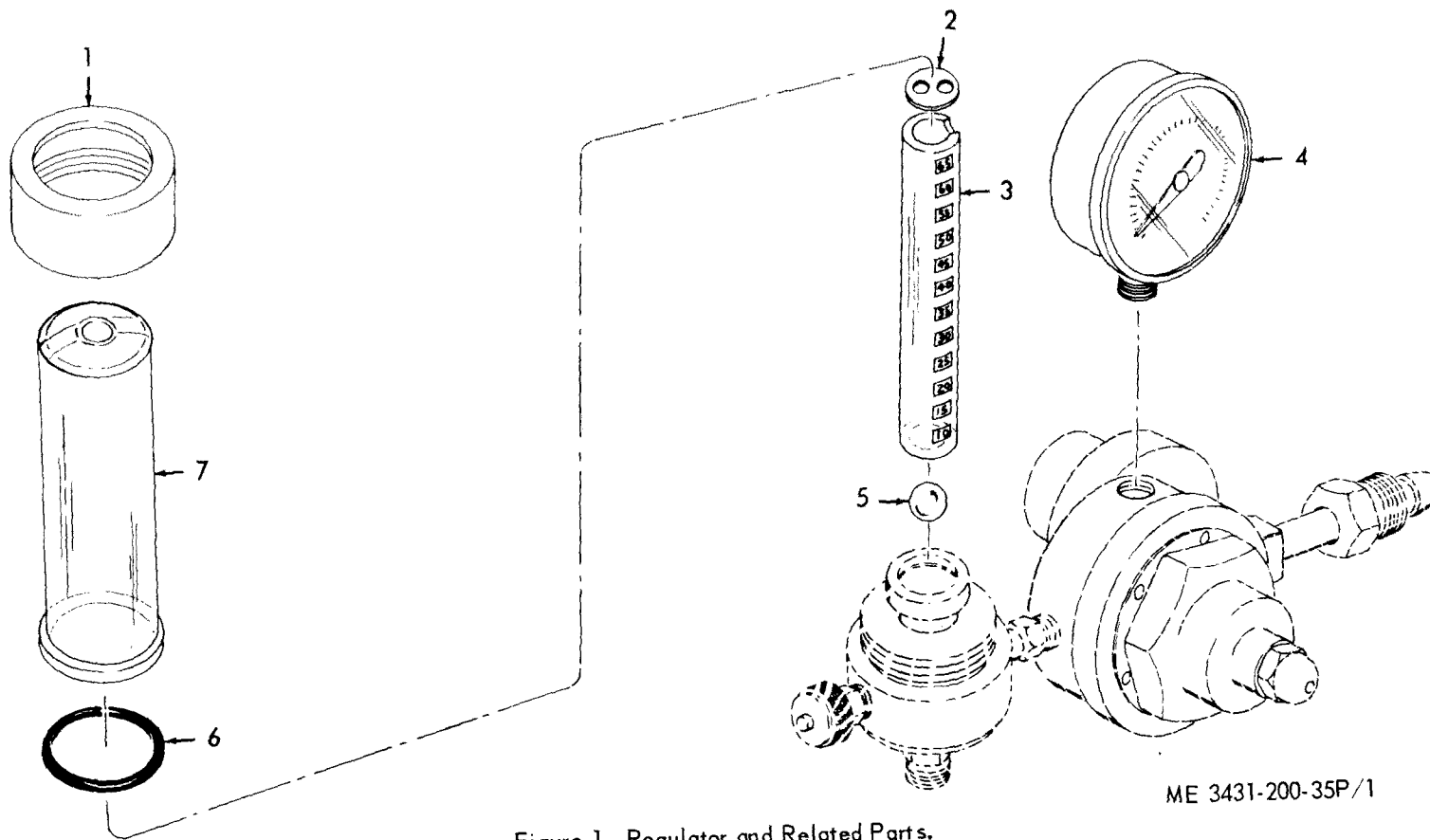


Figure 1. Regulator and Related Parts.

INDEX TO PARTS, FIGURE 1

Reference Number	Functional Group	Item Name
1	4400	NUT
2	4400	GASKET
3	4400	TUBE
4	4400	GAGE
5	4400	BALL
6	4400	PACKING
7	4400	CUP

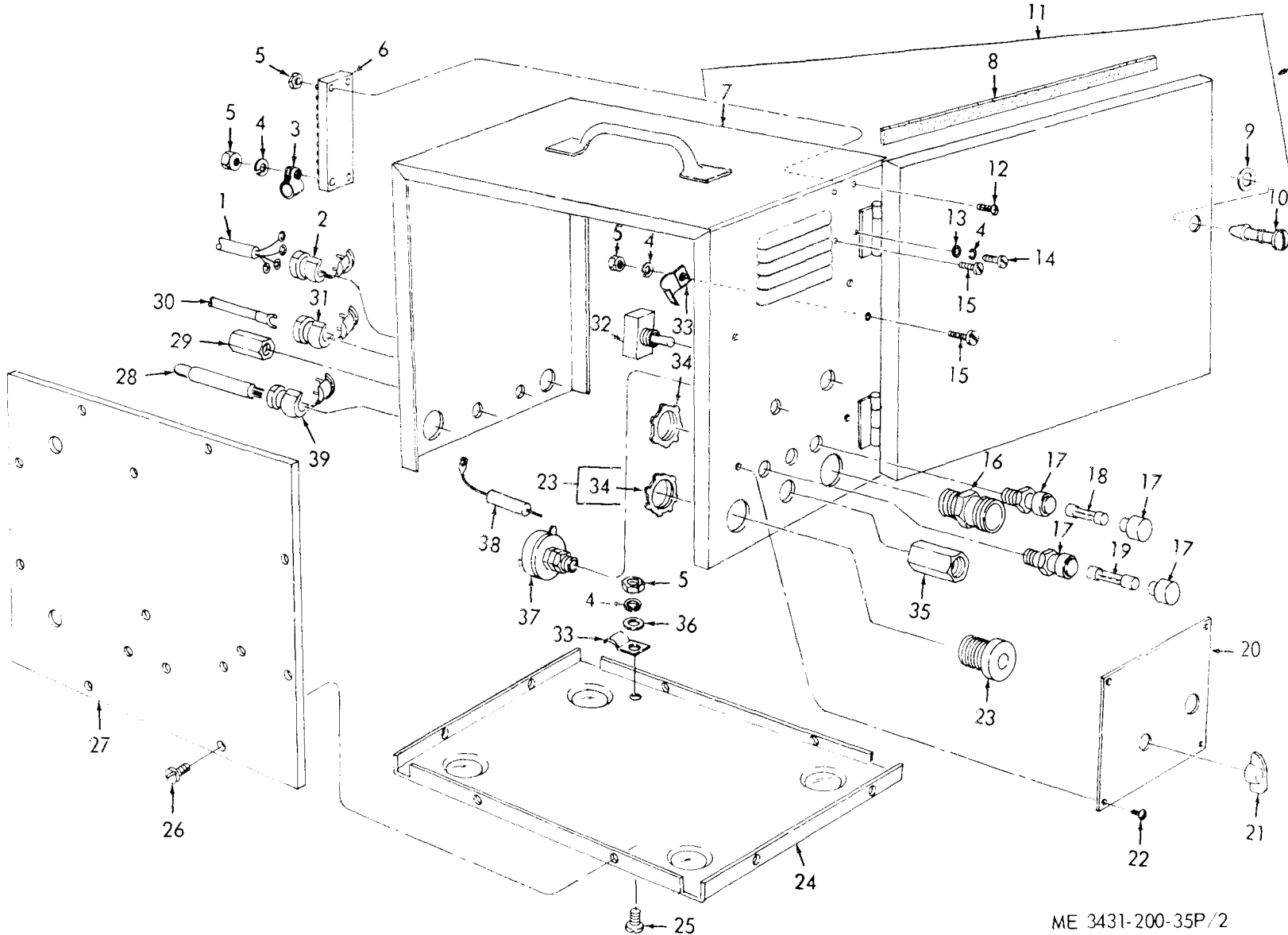
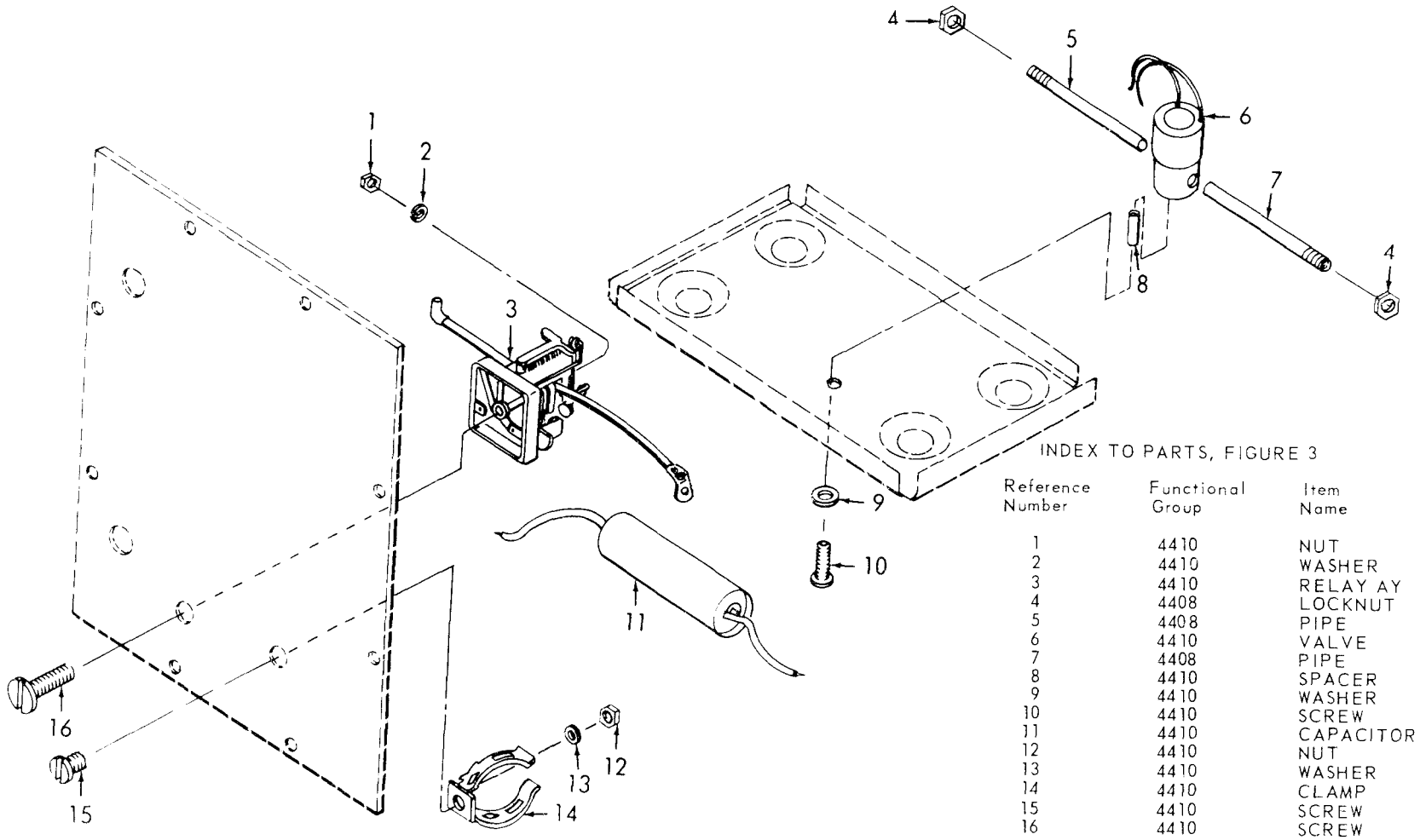


Figure 2. Control Assembly and Related Parts.

ME 3431-200-35P/2

INDEX TO PARTS, FIGURE 2

Reference Number	Functional Group	Item Name	Reference Number	Functional Group	Item Name
1	4408	CABLE AY	19	4409	FUSE
2	4408	RELIEF	20	2210	NAMEPLATE
3	4407	CLIP	21	4411	KNOB
4	4407	WASHER	22	2210	SCREW
4	4408	WASHER	23	4408	RECEPTACLE
5	4407	NUT	24	4407	BASE
5	4408	NUT	25	4407	SCREW
6	4408	TERMINAL STRIP	26	4407	SCREW
7	4407	CABINET AY	27	4407	PANEL
8	4407	GASKET	28	4408	CABLE AY
9	4407	GROMMET	29	4408	FITTING
10	4407	STUD	30	4408	CABLE AY
11	4407	ENCLOSURE	31	4408	RELIEF
12	4408	SCREW	32	4410	SWITCH
13	4408	WASHER	33	4407	CLAMP
14	4408	SCREW	34	4408	LOCKNUT
15	4407	SCREW	35	4408	FITTING
15	4408	SCREW	36	4407	WASHER
16	4408	RELIEF	37	4411	RHEOSTAT
17	4409	FUSE HOLDER	38	4411	RESISTOR
18	4409	FUSE	39	4408	BUSHING



ME 3431-200-35P/3

Figure 3. Relay, Solenoid, Valve, and Related Parts.

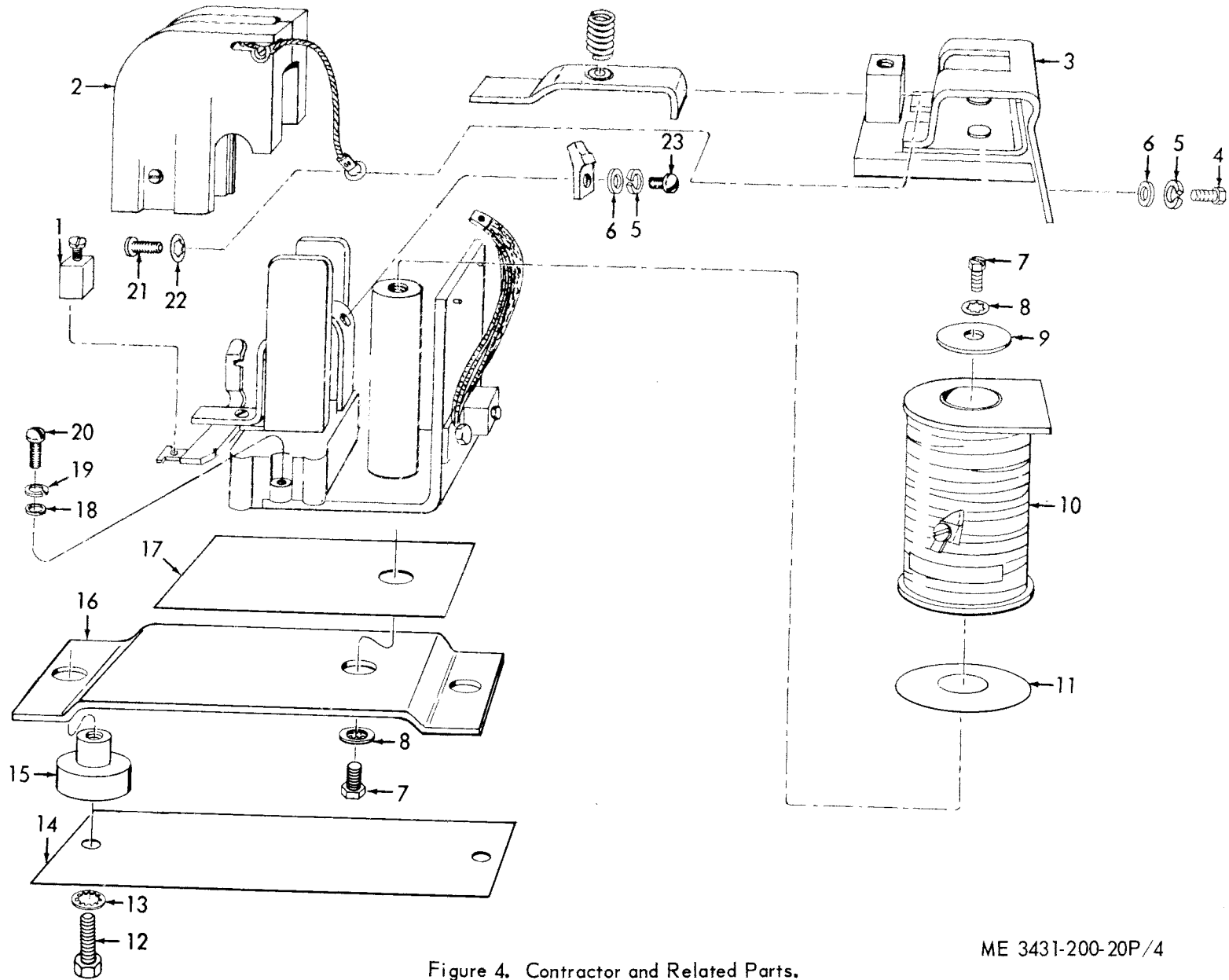


Figure 4. Contractor and Related Parts.

ME 3431-200-20P/4

INDEX TO PARTS, FIGURE 4

Reference Number	Functional Group	Item Name	Reference Number	Functional Group	Item Name
1	4410	TERMINAL	13	4410	WASHER
2	4410	BOX AY	14	4410	FISH PAPER
3	4410	PLATE	15	4410	NUT
4	4410	SCREW	16	4410	PANEL
5	4410	WASHER	17	4410	FISH PAPER
6	4410	WASHER	18	4410	WASHER
7	4410	SCREW	19	4410	WASHER
8	4410	WASHER	20	4410	SCREW
9	4410	WASHER	21	4410	SCREW
10	4410	COIL	22	4410	WASHER
11	4410	RETAINING WASHER	23	4410	SCREW
12	4410	SCREW			

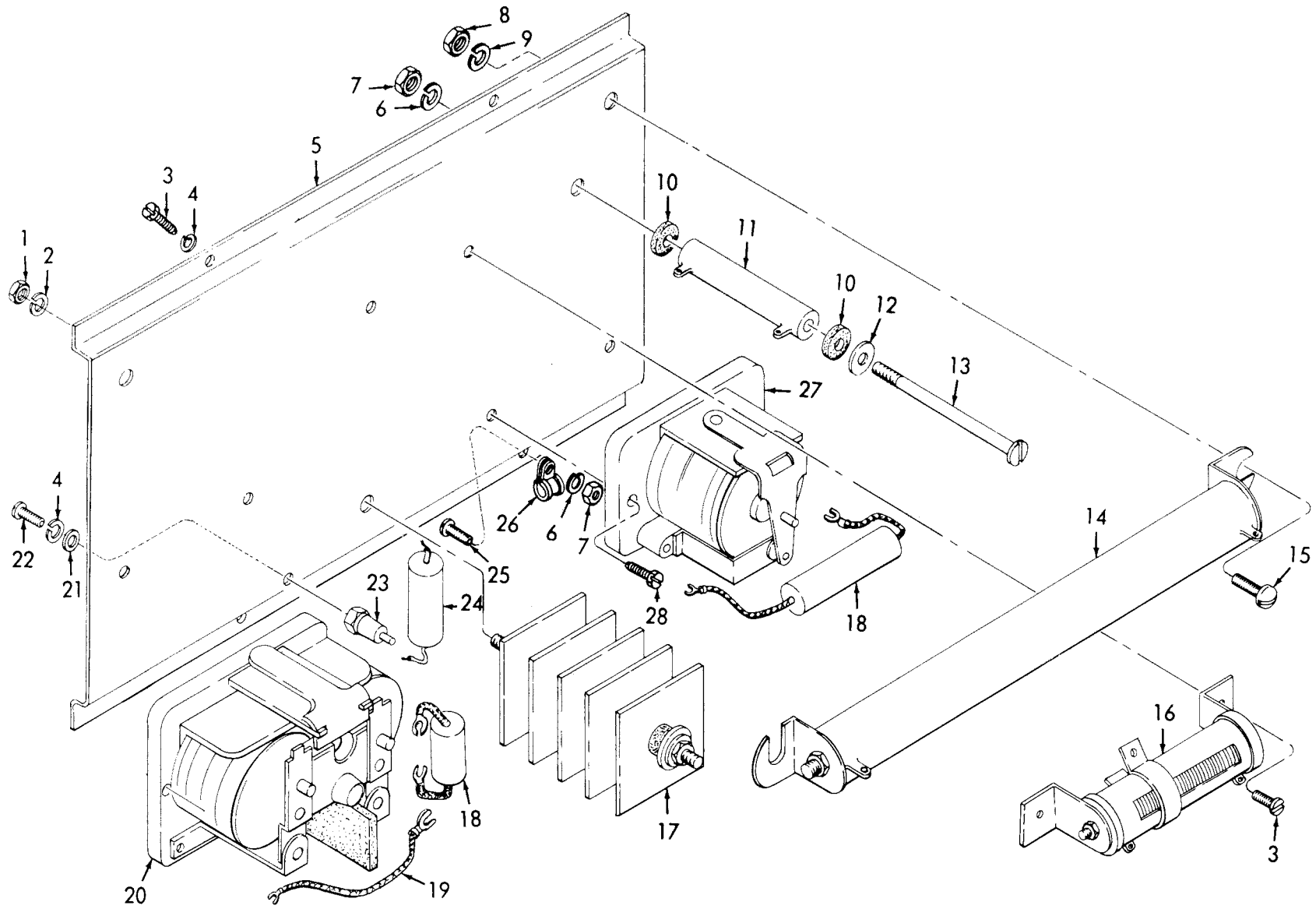


Figure 5. Control Panel and Related Parts.

ME 3431-200-35P/5

INDEX TO PARTS, FIGURE 5

Reference Number	Functional Group	Item Name	Reference Number	Functional Group	Item Name
1	4413	NUT	14	4411	RESISTOR
2	4413	WASHER	15	4411	SCREW
3	4407	SCREW	16	4411	RESISTOR
3	4411	SCREW	17	4413	RECTIFIER
4	4407	WASHER	18	4410	CAPACITOR
4	4410	WASHER	19	4410	LEAD
5	4407	PANEL	20	4410	RELAY
6	4411	WASHER	21	4410	WASHER
7	4407	NUT	22	4410	SCREW
7	4411	NUT	23	4410	TERMINAL
8	4411	NUT	24	4410	CAPACITOR
9	4411	WASHER	25	4407	SCREW
10	4411	WASHER	26	4407	CLAMP
11	4411	RESISTOR	27	4410	RELAY
12	4411	WASHER	28	4410	SCREW
13	4411	SCREW			

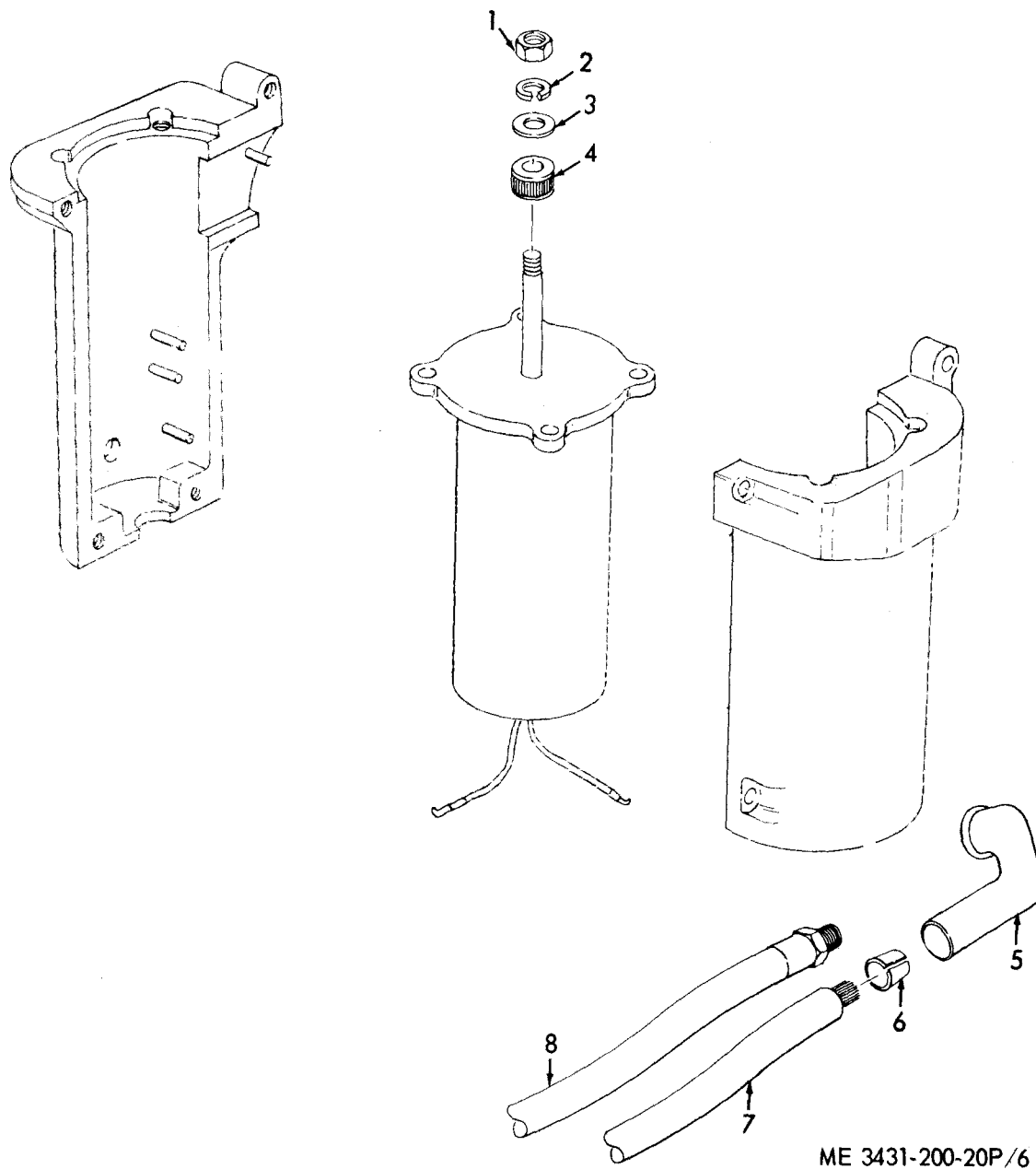
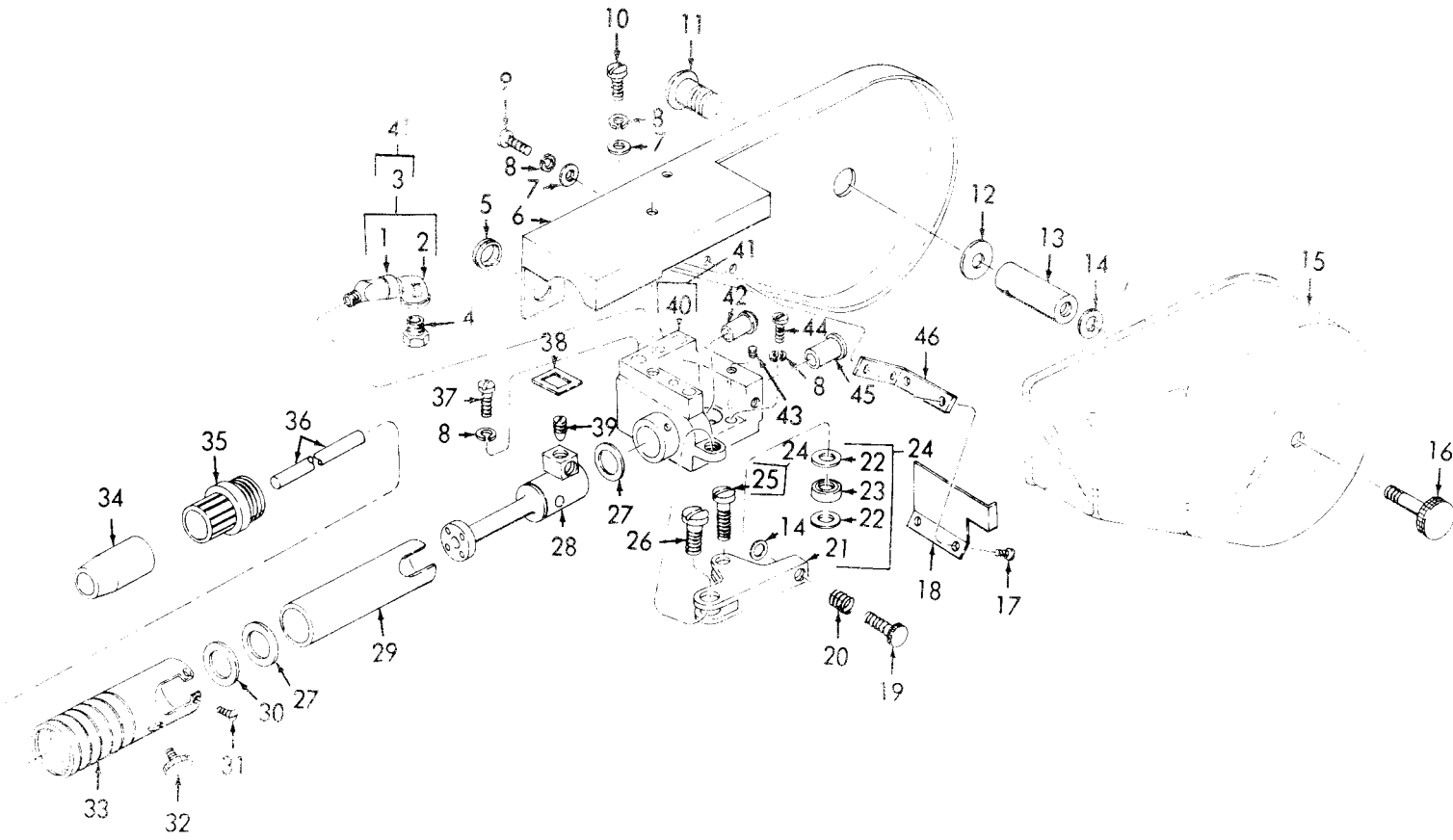


Figure 6. Handle, Motor, and Related Parts.

INDEX TO PARTS, FIGURE 6

Reference Number	Functional Group	Item Name
1	4415	NUT
2	4415	WASHER
3	4415	WASHER
4	4415	ROLL
5	4415	BOOT
6	4415	STRAP
7	4408	CABLE AY
8	4408	HOSE AY



ME 3431-200-35P 7

Figure 3. Duct and Related Parts.

INDEX TO PARTS, FIGURE 7

REFERENCE NUMBER	FUNCTIONAL GROUP	ITEM NAME	REFERENCE NUMBER	FUNCTIONAL GROUP	ITEM NAME
1	4415	ELBOW	24	4415	SWING ARM AY
2	4415	ELBOW	25	4415	SCREW
3	4415	FITTING AY	26	4415	SCREW
4	4415	ADAPTER	27	4415	WASHER
5	4415	GROMMET	28	4415	BARREL AY
6	4415	SHIELD	29	4415	INSULATION
7	4415	WASHER	30	4415	WASHER
8	4415	WASHER	31	4415	SCREW
9	4415	SCREW	32	4415	SCREW
10	4415	SCREW	33	4415	TUBE
11	4415	SCREW	34	4415	NOZZLE
12	4415	WASHER	35	4415	ADAPTER
13	4415	SHAFT	36	4415	TUBE
14	4415	SEAL	37	4415	SCREW
15	4415	COVER	38	4415	INSULATION
16	4415	BOLT	39	4415	SETSCREW
17	4415	SCREW	40	4415	BRACKET AY
18	4415	BRAKE	41	4415	BRACKET-FITTING AY
19	4415	BOLT	42	4415	BUSHING
20	4415	SPRING	43	4415	SETSCREW
21	4415	ARM	44	4415	SCREW
22	4415	WASHER	45	4415	BUSHING
23	4415	BEARING	46	4415	BRACKET

SECTION V. INDEX-FEDERAL STOCK NUMBER AND REFERENCE NUMBER
 CROSS-REFERENCE TO INDEX NUMBER

STOCK NUMBER	INDEX NUMBER	STOCK NUMBER	INDEX NUMBER
1450-775-6226	00034	5305-016-9450	00134
3431-064-6459	00003	5305-017-2125	00132
3431-446-1961	00082	5305-017-2125	00254
3431-446-1961	00195	5305-017-3397	00215
3431-446-2639	00327	5305-017-7355	00216
3431-446-2641	00338	5305-021-5453	00249
3431-446-2642	00316	5305-151-0372	00130
3431-446-2643	00304	5305-151-0372	00181
3431-446-2644	00339	5305-253-5609	00213
3431-446-2645	00306	5305-286-1494	00214
3431-446-2646	00305	5305-543-2665	00127
3431-509-2562	00007	5305-543-2665	00276
3431-858-3080	00138	5305-543-5621	00250
3431-858-3080	00183	5305-543-5621	00251
3431-875-7624	00161	5305-577-5517	00124
3431-875-7624	00307	5305-614-0241	00319
3431-875-7625	00167	5305-614-3423	00123
3431-875-7625	00313	5305-616-2529	00312
3431-875-7625	00326	5305-616-4831	00218
3431-875-7627	00311	5305-622-9476	00126
3431-875-7633	00318	5305-622-9478	00129
3431-875-7637	00341	5305-622-9478	00180
3431-875-7638	00342	5305-622-9486	00128
3431-875-7641	00295	5305-622-9486	00253
3431-875-7642	00315	5305-719-5336	00328
3431-875-7643	00314	5305-809-5978	00133
3431-875-7644	00334	5305-809-5978	00135
3431-875-7645	00336	5305-809-5978	00277
3431-875-7646	00337	5305-809-5978	00325
3431-875-7651	00303	5305-855-0971	00324
3431-875-7652	00308	5305-939-9232	00125
3431-875-7652	00309	5305-939-9232	00131
3431-875-7653	00110	5305-939-9232	00182
3431-875-7653	00173	5305-952-0760	00217
3431-875-7655	00073	5305-954-8151	00219
3431-875-7655	00162	5305-984-5676	00323
3431-875-7656	00075	5305-984-6203	00275
3431-875-7656	00164	5310-010-3319	00347
3431-875-7657	00074	5310-012-1841	00231
3431-875-7657	00163	5310-013-1044	00346
3431-875-7658	00139	5310-044-6179	00226
3431-875-7658	00259	5310-045-3296	00142
3431-875-7930	00288	5310-045-3296	00145
3431-929-0810	00287	5310-045-3296	00184
4310-607-8087	00027	5310-045-3296	00264
4530-888-0057	00051	5310-045-3296	00279
4710-162-1018	00256	5310-045-3299	00144
4710-162-1018	00350	5310-045-3299	00147
4730-014-0561	00169	5310-045-3299	00265
4730-014-0561	00174	5310-045-3299	00285
4730-014-4574	00168	5310-080-6694	00039
4730-278-4829	00302	5310-082-1404	00260
4730-287-1592	00008	5310-082-1404	00345
4730-639-9730	00301	5310-147-2065	00343
4820-472-9955	00011	5310-167-0765	00227
4820-567-0408	00064	5310-205-7782	00278
5304-622-9476	00252	5310-207-9272	00100
5305-012-5519	00321	5310-207-9272	00283
5305-013-1919	00320	5310-208-4074	00096
5305-014-8060	00004	5310-208-4074	00238

SECTION V. INDEX-FEDERAL STOCK NUMBER AND REFERENCE NUMBER
 CROSS-REFERENCE TO INDEX NUMBER (CONTINUED)

STOCK NUMBER	INDEX NUMBER	STOCK NUMBER	INDEX NUMBER
5310-527-3288	00148	5910-875-7888	00191
5310-527-3288	00185	5920-065-3255	00093
5310-527-3288	00232	5920-065-3255	00188
5310-550-1130	00229	5920-280-4960	00092
5310-582-5965	00230	5920-280-4960	00187
5310-637-9541	00146	5920-556-0144	00094
5310-637-9541	00262	5920-556-0144	00189
5310-637-9541	00280	5930-875-7882	00137
5310-639-1532	00344	5930-875-7882	00257
5310-723-4458	00317	5940-283-5280	00150
5310-766-9632	00067	5940-549-1973	00236
5310-809-8544	00140	5945-259-5683	00112
5310-812-0992	00225	5945-259-5683	00242
5310-836-2458	00141	5945-366-7377	00211
5310-836-2458	00143	5945-366-7343	00221
5310-836-2458	00261	5945-367-1226	00210
5310-836-2458	00263	5945-367-1227	00209
5310-843-5586	00066	5945-875-7884	00114
5310-851-2674	00102	5945-875-7884	00244
5310-851-2674	00269	5945-875-7889	00113
5310-887-8043	00049	5945-875-7889	00243
5310-887-8043	00055	5961-794-9862	00111
5310-934-9757	00097	5961-794-9862	00284
5310-934-9757	00098	5970-367-1250	00203
5310-934-9757	00099	5975-803-2536	00072
5310-934-9757	00101	5975-803-2536	00160
5310-934-9757	00103	5975-889-5118	00117
5310-934-9757	00170	5975-889-5118	00175
5310-934-9757	00239	6145-160-4965	00360
5310-934-9757	00268	6145-160-4968	00151
5325-281-3536	00310	6145-160-4968	00154
5325-282-1884	00084	6145-160-4968	00359
5330-072-6185	00041	6145-164-7026	00237
5330-694-2032	00281	6145-164-7026	00355
5330-798-3017	00040	6145-170-3521	00152
5330-807-5490	00042	6145-170-3521	00352
5330-882-0595	00056	6145-170-6872	00153
5340-043-5621	00071	6145-170-6872	00353
5340-803-7635	00058	6145-235-1007	00155
5340-888-0058	00061	6145-235-1007	00354
5905-875-7881	00122	6145-295-0806	00156
5905-875-7881	00274	6145-295-0806	00356
5905-875-7883	00118	6145-295-1271	00157
5905-875-7883	00270	6145-295-1271	00357
5905-875-7886	00119	6145-295-1273	00158
5905-875-7886	00271	6145-295-1273	00358
5905-875-7887	00120	6680-072-6186	00063
5905-875-7887	00272	6680-888-0055	00023
5905-875-7890	00121	6680-888-0056	00019
5905-875-7890	00273	6685-072-6184	00028
5910-668-3725	00193	9515-331-0465	00107
5910-875-7888	00076	9515-331-0465	00351

SECTION V. INDEX-FEDERAL STOCK NUMBER AND REFERENCE NUMBER
 CROSS-REFERENCE TO INDEX NUMBER (CONTINUED)

REFERENCE NO.	MFG CODE	INDEX NO.	REFERENCE NO.	MFG CODE	INDEX NO.
AJ5-40	72794	00087	1228720	88725	00095
BR30015	14655	00077	1228720	88725	00267
BR30015	14655	00192	1257344	88725	00206
PJ4P1	14655	00193	1257356	88725	00199
PR11D	77342	00112	1257363	88725	00221
PR11D	77342	00242	1257366	88725	00210
PR2949	77342	00247	1257367	88725	00211
SR2M1	28520	00117	1257371	88725	00200
SR2M1	28520	00175	1257373	88725	00203
SR47-02	63026	00050	1257374	88725	00228
SR6P1	77342	00116	1257399	88725	00223
SR6P1	77342	00179	1257402	88725	00208
SR8P1	28520	00072	1257462	88725	00209
SR8P1	28520	00160	1289431	88725	00201
SVJ90-02	63026	00011	13B5866G02	88725	00224
SVJ90-02	63026	00012	1403-02	63026	00024
SVJ90-03	63026	00059	1403-05	63026	00036
SVJ90-03	63026	00060	1405-8	63026	00008
VTS40-02D	63026	00056	1407-11	63026	00041
VTS40-13	63026	00045	1407-21	63026	00040
VTS50-07B	63026	00066	1408-25	63026	00029
VTS85-02A	63026	00057	1408-44	63026	00067
VTS85-06	63026	00034	1408-82	63026	00030
VTS85-09	63026	00039	1419587	88725	00202
VTS95-06	63026	00044	1419590	88725	00204
V50-36	63026	00049	1419592	88725	00196
V50-36	63026	00055	1486999	88725	00212
V50-37-1	63026	00048	1490509	88725	00198
V60-03-1	63026	00054	1490517	88725	00197
0600-300	63026	00064	16B9647G02	88725	00220
0701-6010	63026	00009	160P334H01A	88725	00003
0705-02	63026	00058	1600323	88725	00191
0705-03	63026	00043	1746613	88725	00078
0708-01	63026	00042	1746613	88725	00194
0720-28	63026	00032	1781453	88725	00080
0720-29	63026	00033	1942F6	71279	00258
0730-02	63026	00021	205A007H02	88725	00305
0730-03	63026	00017	208A560H05	88725	00233
0731-02	63026	00023	21N5941	88725	00287
0731-03	63026	00019	21N5945	88725	00007
0733-02	63026	00022	220A338H03	88725	00306
0733-03	63026	00018	282498	88725	00310
0735-01	63026	00020	306B172H09	88725	00339
0735-02	63026	00025	307B188H05	88725	00086
0737-03	63026	00037	31D9649COMBBB00	88725	00082
0740-02	63026	00046	31D9649COMBBB00	88725	00195
0740-03	63026	00052	310B141G01	88725	00334
0744-02	63026	00051	310B141H04	88725	00338
0746-02	63026	00047	310B142G01	88725	00161
0746-02	63026	00053	310B142G01	88725	00307
0760-01	63026	00031	311B703H02	88725	00316
0762-02	63026	00061	311B711G01	88725	00308
0970-0101	63026	00062	312001	75915	00093
1001-06	63026	00035	312001	75915	00188
1001-08	63026	00010	312002	75915	00092
1002-02	63026	00016	312002	75915	00187
1012-05	63026	00013	32B1029H15	88725	00138
1012-05	63026	00014	32B1029H15	88725	00183
1014-01	63026	00065	320B222G01	88725	00246
1015-08	63026	00063	320B222H01	88725	00245

SECTION V. INDEX-FEDERAL STOCK NUMBER AND REFERENCE NUMBER

CROSS-REFERENCE TO INDEX NUMBER (CONTINUED)

REFERENCE NO.	MFG CODE	INDEX NO.	REFERENCE NO.	MFG CODE	INDEX NO.
320B222H02	88725	00248	427C605G04	88725	00300
320B224G01	88725	00113	427C612H02	88725	00094
320B224G01	88725	00243	427C612H02	88725	00189
4000LB	63026	00028	429A051H02	88725	00137
419A001H01	88725	00292	429A051H02	88725	00257
419A001H02	88725	00291	429C554G02	88725	00297
419A002G01	88725	00290	429C554H03	88725	00299
419A003H01	88725	00288	429C554H04	88725	00298
419A004H01	88725	00340	432C506G01	88725	00167
419A005H02	88725	00315	432C506G01	88725	00313
419A006H01	88725	00341	432C524G10	88725	00074
419A006H02	88725	00342	432C524G10	88725	00163
419A008H01	88725	00303	435C512G04	88725	00075
419A009G01	88725	00318	435C512G04	88725	00164
419A010H01	88725	00314	44A3880H45	88725	00329
419A011H01	88725	00304	442A169H01	88725	00337
419A012H01	88725	00110	448A024H01	88725	00330
419A012H401	88725	00173	448A027H01	88725	00079
419A015H02	88725	00108	448A043H01	88725	00088
419A015H02	88725	00171	448A043H01	88725	00234
419A015H07	88725	00109	448A043H02	88725	00089
419A015H07	88725	00172	50-20	63026	00015
419A025H01	88725	00293	508C516H60	88725	00111
419A026H02	88725	00335	508C516H60	88725	00284
419A027H01	88725	00332	52D9036H05	88725	00081
419A029H01	88725	00294	552D181H45	88725	00205
419A043H01	88725	00289	552D181H55	88725	00222
419A046H01	88725	00295	557D415H39	88725	00336
419A049H01	88725	00091	557D436H33	88725	00121
419A049H01	88725	00166	557D436H33	88725	00273
419A050H01	88725	00090	557D467G03	88725	00311
419A050H01	88725	00165	55955	88725	00207
419A065H01	88725	00240	576D963G02	88725	00331
422A460H01	88725	00122	576D964H64	88725	00333
422A460H01	88725	00274	576D964H68	88725	00322
422A460H5	88725	00270	59C1598G13	88725	00073
422A471H11	88725	00114	59C1598G13	88725	00162
422A471H11	88725	00244	63026-1406-01	63026	00026
422A472H02	88725	00139	637C247H01	88725	00309
422A472H02	88725	00259	637C249H01	88725	00104
422A473H03	88725	00119	637C251H01	88725	00105
422A473H03	88725	00271	637C251H01	88725	00241
422A473H04	88725	00115	73P47306	56289	00076
422A473H04	88725	00120	76D964H07	88725	00327
422A473H04	88725	00272	827D037G01	88725	00084
422A473H05	88725	00118	827D037G02	88725	00083
422A505G01	88725	00326	827D037G09	88725	00085
422A526G03	88725	00176	827D037H02	88725	00070
422A526H02	88725	00177	9G9359	88725	00069
422A526H04	88725	00178	930	63026	00027
427C605G03	88725	00296	973-01A	63026	00038

By Order of the Secretary of the Army:

W. C. WESTMORELAND,
General, United States Army,
Chief of Staff.

Official:

KENNETH G. WICKHAM,
Major General, United States Army,
The Adjutant General.

Distribution:

To be distributed in accordance with DA Form 12-25, Sec I (qty rqr Block #182), Organizational maintenance requirements for Welding equipment.

TM 5-3431-200-20P WELDING SET, ARC, INERT GAS SHIELDED-1969